

# NITECORE®

KEEP INNOVATING

## NEF02 User Manual



### ⚠ IMPORTANT

- Thanks for purchasing NITECORE! Please read this manual carefully before using the product and follow the instructions.
- This manual contains important safety information and operating instructions. Please keep it for future reference.
- In case of updates, please refer to the latest version available on the official website.

### ⚠ Warning

1. CAUTION! Possible dangerous radiation! DO NOT stare directly into the light beam or shine the light directly into the eyes of anyone!
2. DO NOT put your hands or any foreign objects into the running blades to avoid accidents or damage to the product.
3. The highest wind speed will not be available due to low power during use. Please recharge the product as soon as possible.
4. DO NOT use the product in damp environments to avoid malfunction or damage.
5. DO NOT disassemble, modify or repair the product as doing so will render the product warranty invalid. Please refer to the warranty section in the manual for complete warranty information.
6. Please charge the product with a specified voltage.
7. DO NOT place the product close to the fire to avoid accidents and damage to the product.
8. Please store the product in cool and dry places. Keep the product out of reach of children.
9. Please keep the product clean to prevent water, insects, and foreign matters from entering the product, which may cause the product to fail to work.
10. DO NOT twist the charging cable or pull it forcibly during charging to avoid damage to the charging cable and prevent electricity leakage.
11. The product is designed to be used by adults. Children under 16 years old must be under adult supervision when using this product to avoid accidents.

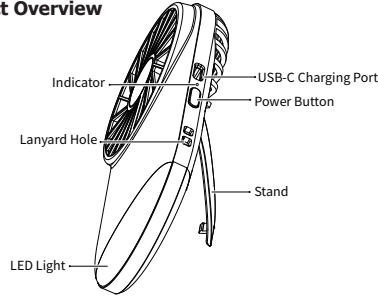
### ⚠ Battery Safety

Improper use of devices with built-in Li-ion batteries may result in severe battery damage or safety hazards such as combustion or explosion. DO NOT use the device if it is damaged. DO NOT disassemble, puncture, cut, crush, or incinerate the device. If any leakage or abnormal odor is noticed, stop using the device immediately. Dispose of the device/batteries in accordance with applicable local laws and regulations.

### Features

- 4 levels of wind speed available
- Built-in 1,200mAh Li-ion battery with a max runtime of 7.5 hours
- Intelligent Li-ion battery charging circuit with a USB-C charging port
- Curved LED light available
- Comes with a stand on the back, offering both desktop placement and handheld use
- Made of durable ABS and PC materials
- 97g (3.42 oz) ultra lightweight for easy carry

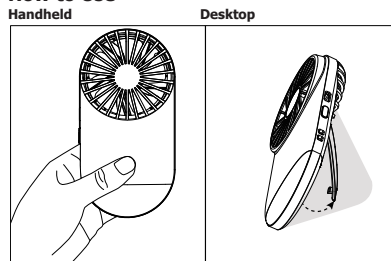
### Product Overview



### Specifications

Model	NEF02			
Capacity	1,200mAh			
Rated Input	5V-1A			
Rated Power	5W (MAX)			
Charging Time	2h (5V/1A Adapter)			
Dimensions	76.0mm x 24.0mm x 148.0mm (2.99" x 0.94" x 5.83")			
Weight	97g / 3.42 oz (Accessory Not Included)			
Rotational Speed	4,500 RPM (MAX)			
Runtime of the Fan	TURBO	HIGH	MID	LOW
	2h	3h	4.5h	7.5h
Runtime of the LED Light	13h			
Accessory	USB-C Charging Cable			

### How to Use



### Charging Function

The NEF02 has an intelligent charging function. Please charge it before first use.

#### Power Connection

Use the USB cable to connect an external power supply (e.g. a USB adapter, a power bank, or other USB charging devices) to the charging port to begin the charging process. The charging time is approx. 2h (Charged via the 5V/1A Adapter).

### Charging Indication

- During the charging process, the indicator will turn red and remain on to inform the user.
  - If the fan is turned on while charging, the indicator will turn red and blue and remain on.
  - When the product is fully charged, the indicator will turn green and remain on.
- Note:** The fan and the LED light are available during the charging process.

### Operating Instructions

Both the fan and the LED light can be used simultaneously or separately.

#### Fan

- **On:** When the fan is off, short press the Power Button to turn it on. The default starting level of the fan is LOW. The indicator will turn blue and remain on.
- **Off / Switching:** When the fan is on, continuously short press the Power Button to cycle through the following sequence: LOW – MID – HIGH – TURBO – Off.

#### Lighting

- **On:** When the light is off, long press the Power Button to turn on the white light.
- **Off:** When the light is on, long press the Power Button to turn off the white light.

### Indicator

Status of Indicator	Status of the Fan
Blue Constant-on	On
Red Flashing	Low power (approx. 10%) Please charge the product promptly.
Red Constant-on	Charging
Red + Blue Constant-on	Use the fan while charging
Green Constant-on	Fully charged
Green + Blue Constant-on	Fully charged while using the fan

### Maintenance

- Turn off the power before cleaning the NEF02.
- Wipe the body and the fan covers with a dry cloth.
- DO NOT clean the product with water or any other liquids.
- Clean the fan covers promptly if dust or debris accumulates to prevent dust from entering the fan.

### Warranty Service

All NITECORE® products are warranted for quality. Any DOA / defective product can be exchanged for a replacement through a local distributor / dealer within 15 days of purchase. After that, all defective/malfunctioning NITECORE® products can be repaired free of charge within 12 months from the date of purchase. Beyond 12 months, the charge for accessories, replacement parts and delivery shall be at your own expenses.

The warranty will be nullified if

1. the product(s) is / are broken down, reconstructed and / or modified by unauthorized parties.
2. the product(s) is / are damaged due to improper use.

For the latest information on NITECORE® products and services, please contact a local NITECORE® distributor or send an email to [service@nitecore.com](mailto:service@nitecore.com).

- ※ The trademarks and product images specified herein this user manual are for reference purposes only. The copyright belongs to their lawful holders.
- ※ All images, texts and statements specified herein this user manual are for reference purposes only. Should any discrepancy occur between this manual and information specified on [www.nitecore.com](http://www.nitecore.com), Sysmax Innovations Co., Ltd. reserves the rights to interpret and amend the content of this document at any time without prior notice.

### SYSMAX Innovations Co., Ltd.

TEL: +86-20-83862000  
 FAX: +86-20-83882723  
 E-mail: [info@nitecore.com](mailto:info@nitecore.com)  
 Web: [www.nitecore.com](http://www.nitecore.com)  
 Address: Unit 6355, 5/F, No.1021 Gaopu Road, Tianhe District, Guangzhou, 510653, Guangdong, China



# NITECORE® 奈特科尔

## NEF02 使用说明书



### ⚠ 重要提示

- 感谢您购买 NITECORE 的产品！
- 使用本产品前请仔细阅读本说明书，并严格按照说明书操作。
- 说明书包含重要的安全警示和操作说明，请妥善保管，以便日后查阅。
- 本说明书如有更新，请以官网最新版本的说明书为准。

### ⚠ 注意事项

- 请勿将光线直接照射眼睛或直视光源，以免对眼睛造成伤害。
- 请勿将手或异物插入运转的风扇中，以免发生意外或可能会导致产品损坏。
- 风扇在正常使用时，当剩余电量过低，将无法使用最高挡风速，请及时给风扇充电。
- 请勿在潮湿环境中使用本产品，接触水可能会导致产品故障或损坏。
- 请勿自行拆解、更改或修理本产品，可能会导致保修服务失效，详情请查看保固条款。
- 请勿使用超过规定电压的适配器为本产品充电。
- 请勿将产品靠近火源，以免发生意外和可能会导致产品损坏。
- 请将产品存放在阴凉干燥以及小孩无法接触到的地方。
- 请定时清洁风扇，避免因水滴、虫子或异物进入内部，导致风扇不能正常运转。
- 请勿在充电过程中缠绕充电线或用力拉扯充电线，避免充电线损坏，也防止电源漏电。
- 未成年人在监护人陪同下使用本产品，避免发生意外。

### ⚠ 电池安全

不恰当地使用内置锂电池的设备，可能会损坏电池或引发燃烧、爆炸等危险。若本产品损坏，请勿使用。请勿拆卸、刺穿、切割、挤压、焚烧本品。如果发现有任何泄漏或异味，应立即停止使用本品并将其安全处理。请根据适用的当地法律和法规处置设备/电池。

广州希脉创新科技有限公司

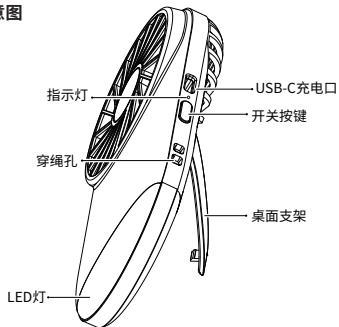
咨询热线: +86-20-83862000  
销售邮箱: info@nitecore.com  
网 址: www.nitecore.cn  
地 址: 广东省广州市天河区高普路 1021 号 5 楼 6355 号  
邮 编: 510653



### 产品特性

- 风量 4 档可调
- 内置 1200mAh 聚合物锂电池，长达 7.5 小时续航
- 配备智能锂电池充电电路，USB-C 直充
- 配有弧形夜灯
- 背部支架设计，可立握两用
- 机身外壳采用 ABS+PC 材质，坚固耐磨
- 97g 超轻机体设计，方便携带

### 产品示意图

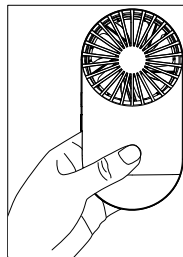


### 基本参数

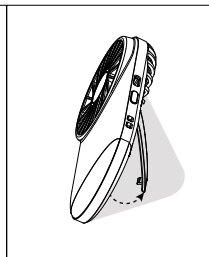
产品型号	NEF02		
电池容量	1200mAh		
额定输入	5V-1A		
额定功率	5W (MAX)		
充电时间	2 小时 (5V/1A 适配器)		
产品尺寸	76.0mm x 24.0mm x 148.0mm (2.99" x 0.94" x 5.83")		
产品重量	97g / 3.42oz (不含配件)		
转速	4500RPM (MAX)		
风扇续航时间	极速挡	高档	中档
	2 小时	3 小时	4.5 小时
照明续航时间	13 小时		
配件	USB-C 充电线		

### 使用方式

#### 手持



#### 桌面放置



### 充电

本产品自带智能充电功能，初次使用前，请先对 NEF02 进行充电。

#### 连接电源

把充电线一端连至本品 USB 接口，另一端接上 USB 适配器、移动电源或其他 USB 供电设备即可充电。充电时间约为 2 小时 (5V/1A 适配器)。

### 充电提示

- 当处于正常充电状态下，指示灯红光长亮，提示正在充电中；
  - 在充电状态下使用风扇功能，指示灯红光和蓝光长亮；
  - 当指示灯绿光长亮，表示充电完成。
- 注：在充电过程中，可正常使用风扇功能和照明功能。

### 操作指示

本品可同时使用风扇功能和照明功能，也可单独使用风扇功能和照明功能。

#### 风扇功能

- 开启：**风扇关闭状态下，短按开关按键，即可开启风扇功能，默认风扇开启挡位为低挡，指示灯蓝光长亮。
- 关闭/挡位切换：**风扇开启状态下，连续短按开关按键，按以下顺序循环切换：低挡 - 中挡 - 高档 - 极速挡 - 关闭风扇。

#### 照明功能

- 开启：**照明关闭状态下，长按开关按键，开启白光照明。
- 关闭：**照明开启状态下，长按开关按键，关闭白光照明。

### 指示灯提醒

指示灯状态	风扇状态
蓝光长亮	开启风扇功能
红光闪烁	电量约 10%，请及时充电
红光长亮	正在充电
红光、蓝光长亮	边充电边开启风扇功能
绿光长亮	充满电
绿光、蓝光长亮	使用风扇功能时充满电

### 维护与保养

- 对本品进行清洁前，请确保 NEF02 已关闭。
- 用于抹布擦拭机身和风扇。
- 禁止用水或其他液体清洗本产品。
- 当风扇有灰尘或异物请及时清理，避免灰尘掉入风扇内部。

### 保固服务

NITECORE® 产品拥有售后保固服务。在购买本产品的 15 天内，如果有任何质量问题均可向经销商要求免费更换。在购买本产品的 12 个月内享受免费保固服务。在超过 12 个月免费保固期后，厂家将收取相应的材料费以及快递费。

本保固规定不适用于以下情况：

- 人为破坏，拆解，改装本产品。
  - 错误操作导致产品损坏。
- 如对待奈特科尔产品有任何疑问，欢迎联系当地的代理商或发邮件到 4008869828@nitecore.cn
- ※ 本说明书中出现的商标及其产品图片版权属于其合法持有人，此处仅作展示所用。
  - ※ 本说明书的所有图片、陈述及文字信息仅供参考，请以官网 www.nitecore.cn 实际信息为准。广州希脉创新科技有限公司拥有对说明书内容的最终解释权 and 修改权。

了解 NITECORE 奈特科尔最新动态，欢迎关注：

@NITECORE 奈特科尔  
@NITECORE 奈特科尔

