



POWER SOLUTION

PRODUCT CATALOG

NITECORE®

CONTENTS

About NITECORE	2
Power Solution	4
— Portable Power	6
— Charger	12
Batteries	18
Lighting	20
Accessories	24
— Camera Cleaning Solutions	24
— Titanium / Aluminum Collection	26
— Backpacks & Pouches	28

All images, text and statements specified here in this catalogue are for reference purpose only. Should any discrepancy occurs between this catalogue and information specified on www.nitecore.com, information on our official website shall prevail. Sysmax Innovations Co., Ltd. reserves the rights to interpret and amend the content of this document at any time without prior notice.

▶ PHOTO CREDITS

Vrg Fotografia
Will Godward
Lee McGrath
Tactical Two
Alexander Morris
Darren White
Kristian Bjerre
Kirk Meyer
Koen van der Jagt
Rigor Mor
Vittorio Crobu
Saboter
Xiaoyu
Pablofurius
Gaoli
Zhujinbin
Paul Chong



ABOUT NITECORE

Inspired by the notion to "Keep Innovating" with the industry-leading innovative power for 14 years, NITECORE is the first brand to achieve a grand-slam milestone in the industries of professional lighting and chargers to receive the German iF Design Award, Red Dot Design Award, the Japanese G-Mark (Good Design) and the American IDEA, as well as Gold Winners of the ISPO Award and Outstanding Outdoor globally recognized in the outdoor industry. Our partners include Ultra-Trail Show organized by UTMB, HK100, Rio 2016 Summer Olympics in Brazil and Supreme.

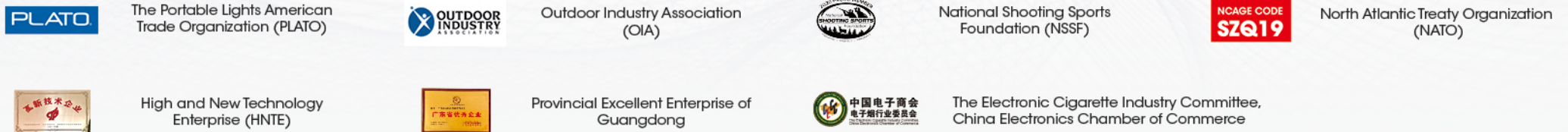
Operating in full compliance with ISO9001 and qualified as China's High and New Technology Enterprise (HNTE), NITECORE and its factories have set the most exacting production and testing standards to ensure quality and performance. Our products have gained multiple certifications including CE, RoHS, FCC, CEC, REACH, KC, C-TICK and more. All batteries and chargers are globally insured by Ping An Insurance Group.

NITECORE Outdoor Power Solutions aim to create an eco-friendly power system with a green and sustainable lifestyle for outdoor enthusiasts. We strive to offer the most intelligent experience with professional, reliable and efficient energy storage products, designed to innovate the way of accessing power off the grid and allow a limitless power supply on the go.



GLOBAL PRESENCE

NITECORE has played an essential role in various organizations around the globe and has made great contributions to the outdoor industry. By now we are the active members of the following organizations:



P O W E R S O L U T I O N



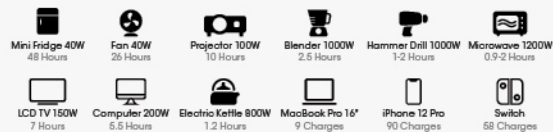


► NES1200



Portable Outdoor Power Station

- Dimensions: 317mm x 214mm x 282.5mm (12.48' x 8.43' x 11.12')
- Weight: 10.65kg (23.48lbs)



NES1200 SPEC

Cell	18650 Li-ion Batteries	
Capacity	1252.8Wh (21.6V, 58Ah) (348000mAh)	
DC Input	12V-36V, up to 10A	180W max
USB-C Input	5V=3A / 9V=3A / 12V=3A / 15V=3A / 20V=5A	100W max per port
AC Output	220V Version: 220V~6A 50Hz, Pure Sine Wave 110V Version: 110V~11A 60Hz, Pure Sine Wave	1200W, 2200W surge
Cig Lighter Output	12V=10A	120W max
USB-A Output	5V=3A / 9V=2A / 12V=2A / 20V=1.5A	30W max per port
USB-C Output	5V=3A / 9V=3A / 12V=3A / 15V=3A / 20V=5A	100W max per port
Operating temperature	-10~40°C (14~104°F)	

► NES500

Portable Outdoor Power Station



NES500 SPEC

Cell	18650 Li-ion Batteries	
Capacity	518Wh (10.8V, 48Ah) (144000mAh)	
DC Input	14.4V-26V, up to 10A (160W max)	
AC Output	220V Version: 220V~2.27A 50Hz, Pure Sine Wave 110V Version: 110V~4.54A 60Hz, Pure Sine Wave	500W, 1000W surge
Cig lighter port	12V=10A (120W max)	
USB Output	5V=2.4A (12W max each port)	
USB-C Output	5V=3A / 9V=3A / 12V=3A / 15V=3A / 20V=3A (60W max)	
Operating temperature	-10~40°C (14~104°F)	

- Dimensions: 262mm x 237mm x 154mm (10.31' x 9.33' x 6.06")
- Weight: 5.65kg (12.46lbs)

► NES300

Portable Outdoor Power Station



NES300 SPEC

Cell	18650 Li-ion Batteries	
Capacity	311Wh (10.8V, 28.8Ah) (86400mAh)	
DC Input	14.4V-26V, up to 10A (160W max)	
AC Output	220V Version: 220V~0.91A 50Hz, Pure Sine Wave 110V Version: 110V~1.81A 60Hz, Pure Sine Wave	200W, 400W surge
Cig lighter port	12V=10A (120W max)	
USB Output	5V=2.4A (12W max each port)	
USB-C Output	5V=3A / 9V=3A / 12V=3A / 15V=3A / 20V=3A (60W max)	
Operating temperature	-10~40°C (14~104°F)	

- Dimensions: 227mm x 211mm x 129mm (8.94' x 8.31' x 5.08")
- Weight: 3.4kg (7.5lbs)



► NPS200

Portable Outdoor Power Station

NPS200 SPEC

Cell	18650 Li-ion Batteries	
Capacity	196.56Wh (10.8V, 18.2Ah) (54600mAh)	
DC Input	14.4V-26V, up to 10A (160W max)	
AC Output	220V Version: 220V~0.68A 50Hz, Pure Sine Wave 110V Version: 110V~1.4A 60Hz, Pure Sine Wave	150W, 300W surge
Cig lighter port	12V=10A	Cig Lighter + DC Output: Total 120W max
DC Output	12V=10A	
USB Output	5V=2.4A	
USB QC Output	5V=2.4A/9V=2A	
USB-C Output	5V=3A/9V=3A/12V=3A/15V=3A/ 20V=3A	
Operating temperature	-10~40°C (14~104°F)	

- Dimensions: 209mm x 156.3mm x 137.3mm (8.23" x 6.15" x 5.41")
- Weight: 3.35kg (7.39lbs)



► NPS400

Portable Outdoor Power Station

NPS400 SPEC

Cell	18650 Li-ion Batteries	
Capacity	421Wh (10.8V, 39Ah) (117000mAh)	
DC Input	14.4V-26V, up to 10A (160W max)	
AC Output	220V Version: 220V~1.36A 50Hz, Pure Sine Wave 110V Version: 110V~2.75A 60Hz, Pure Sine Wave	300W, 600W surge
Cig lighter port	12V=10A	Cig Lighter + DC Output: Total 120W max
DC Output	12V=10A	
USB Output	5V=2.4A	
USB QC Output	5V=2.4A/9V=2A	
USB-C Output	5V=3A/9V=3A/12V=3A/15V=3A/ 20V=3A	
Operating temperature	-10~40°C (14~104°F)	

- Dimensions: 244mm x 187.7mm x 157.3mm (9.61" x 7.39" x 6.19")
- Weight: 5.68kg (12.52lbs)



► NPS600

Portable Outdoor Power Station

NPS600 SPEC

Cell	21700 Li-ion Batteries	
Capacity	594Wh (10.8V, 55Ah) (165000mAh)	
DC Input	14.4V-26V, up to 10A (160W max)	
AC Output	220V Version: 220V~1.36A 50Hz, Pure Sine Wave 110V Version: 110V~2.75A 60Hz, Pure Sine Wave	300W, 600W surge
Cig lighter port	12V=10A	Cig Lighter + DC Output: Total 120W max
DC Output	12V=10A	
USB Output	5V=2.4A	
USB QC Output	5V=2.4A/9V=2A	
USB-C Output	5V=3A/9V=3A/12V=3A/15V=3A/ 20V=3A	
Operating temperature	-10~40°C (14~104°F)	

- Dimensions: 244mm x 187.7mm x 157.3mm (9.61" x 7.39" x 6.19")
- Weight: 5.83kg (12.85lbs)



▶ **UA42Q**

2-Port QC USB Adapter

UA42Q SPEC	
Input	100-240V~ 50/60Hz 1A (MAX)
Output	5V=3A, 9V=2A, 12V=1.5A 36W MAX



▶ **UA55**

5-Port USB Desktop Adapter

UA55 SPEC	
Input	100-240V~ 50/60Hz 1.5A (MAX)
Output	5V=10A (2A MAX Per Port) 50W MAX



▶ **UA66Q**

6-Port QC USB Desktop Adapter

UA66Q SPEC	
Input	100-240V~ 50/60Hz 1.5A (MAX)
Output	5V USB Ports: 5V=10A (2A MAX Per Port), 50W MAX QC 3.0 Port: 5V=2A / 9V=2A / 12V=1.5A, 18W MAX Total 68W MAX



▶ **FSP100W**

ETFE Waterproof Foldable Solar Panel



FSP100W SPEC	
Dimensions	Unfolded: 1,294mm x 606mm x 5mm (50.9' x 23.9' x 0.2")
	Folded: 385mm x 300mm x 45mm (15.2" x 11.8' x 1.8")
Weight	2.6kg (5.7lbs)
IP Rating	IPX5
Panel Number	8
Cell Efficiency	*≥23%
Operating Current	DC Output 5.6A
Operating Voltage	DC Output 18V
Total Output Power	100W (MAX)
Output Port	7.9*5.5mm



▶ **FSP100**

Foldable Solar Panel

FSP100 SPEC	
Dimensions	Unfolded: 58cm x 143cm x 2.5cm (22.8" x 56.3' x 1.0")
	Folded: 29cm x 34cm x 7cm (11.4' x 13.4" x 2.8")
Weight	2.1kg (4.6lbs)
Panel Number	8
Cell Efficiency	*24%
Operating Current	DC Output 5.4A
Operating Voltage	DC Output 18V (MAX)
Total Output Power	100W (MAX)
Output Ports	7.9*5.5mm, USB-A x 2, USB-C
USB-A Output	Total 5V=3.1A
USB-C Output	5V=3A / 9V=3A / 12V=3A / 15V=3A

▶ **Parallel Cable**



▪ Length: 5m (16ft)

▶ **Extension Cable**



▪ Length: 10m (33ft)



▶ **NB20000**

Ultra Lightweight Carbon Fiber Energy Brick



324.5g
(11.45oz)

NB20000 SPEC	
Cell	Li-ion
Capacity	20,000mAh 3.85V (77Wh)
Rated Energy	13,500mAh 5V (TYP 2A)
Input	USB-C (INPUT): 5V=2.4A / 9V=2A / 12V=1.5A
	USB-C (IN): 5V=2.4A / 9V=3A / 12V=2.5A / 15V=2A / 20V=1.5A (30W MAX)
Output	USB-C (OUT1): 5V=2.4A / 9V=3A / 12V=3A / 15V=3A / 20V=2.25A (45W MAX)
	USB-A (OUT2/OUT3): 5V=2.4A / 9V=2A / 12V=1.5A
	Multi Ports: 5V=3A (MAX)

▶ **NB10000**

Ultra Lightweight Carbon Fiber Energy Brick



150g
(5.29oz)

NB10000 SPEC	
Cell	Li-ion
Capacity	10,000mAh 3.85V (38.5Wh)
Rated Energy	6,400mAh 5V (TYP 1A)
Input	USB-C: 5V=2.4A / 9V=2A
Output	USB-C: 5V=3A / 9V=2A / 12V=1.5A
	USB-A: 5V=3A / 9V=2A / 12V=1.5A Dual Ports: 5V=3A (MAX)
Dimensions	121.9mmx59mmx10.6mm (4.8" x2.32" x0.42")

▶ **NB5000**

Ultra Lightweight Carbon Fiber Energy Brick



115g
(4.06oz)

NB5000 SPEC	
Cell	Li-ion
Capacity	5,000mAh 3.7V (18.5Wh)
Rated Energy	3,200mAh 5V (TYP 1A)
Input	USB-C: 5V=2.4A / 9V=2A
Output	USB-C: 5V=3A / 9V=2A / 12V=1.5A
	USB-A: 5V=3A / 9V=2A / 12V=1.5A Dual Ports: 5V=3A (MAX)
Dimensions	104.9mmx59mmx10.6mm (4.13"x2.32"x0.42")

▶ **NPB1**

Waterproof Power Bank



NPB1 SPEC	
Battery Type	21700 Li-ion Battery
Capacity	5,000mAh 3.64V (18.2Wh)
Rated Energy	3,200mAh 5V (TYP 1A)
Input	Micro-USB: 5V=2A
Output	USB-A: 5V=2.4A 9V=2A (18W MAX)
IP Rating	IP68



▶ **NPB2**

Waterproof Power Bank



NPB2 SPEC	
Battery Type	21700 Li-ion Battery
Capacity	10,000mAh 3.64V (36.4Wh)
Rated Energy	6,400mAh 5V (TYP 1A)
Input	Micro-USB: 5V=2A 9V=2A
Output	USB-A: 5V=2.4A 9V=2A 12V=1.5A
	Single Port: 5V=2.4A 9V=2A 12V=1.5A Dual Ports: 5V=2.4A (18W MAX)
IP Rating	IP68



▶ **NPB4**

Waterproof Power Bank



NPB4 SPEC	
Battery Type	21700 Li-ion Battery
Capacity	20,000mAh 3.64V (72.8Wh)
Rated Energy	12,400mAh 5V (TYP 1A)
Input	Micro-USB: 5V=2.4A 9V=2A
	USB-C: 5V=3A 9V=2A 12V=1.5A
Output	USB-A: 5V=3A 9V=2A 12V=1.5A
	USB-C: 5V=3A 9V=2A 12V=1.5A Multi Ports: 5V=3A
IP Rating	IP68





▶ UM2 **2 BATTERY SLOTS** **USB CHARGING**

Intelligent USB Dual-Slot Charger

UM2 SPEC	
Compatible with	IMR/Li-Ion/LiFePO4/Ni-MH/Ni-Cd
Input	DC 5V/2A 9V/2A 18W (MAX)
Output voltage	4.35V±1% / 4.2V±1% / 3.7V±1% / 1.48V±1%
Output current	QC Mode: 1,500mA*2 (MAX) Standard Mode: 1,000mA*2 (MAX)



▶ UM4 **4 BATTERY SLOTS** **USB CHARGING**

Intelligent USB Four-Slot Charger

UM4 SPEC	
Compatible with	IMR/Li-Ion/LiFePO4/Ni-MH/Ni-Cd
Input	DC 5V/2A 9V/2A 18W (MAX)
Output voltage	4.35V±1% / 4.2V±1% / 3.7V±1% / 1.48V±1%
Output current	QC Mode: 1,500mA*1 (MAX), 1,500mA*2 (MAX), 750mA*4 (MAX) Standard Mode: 1,500mA*1 (MAX), 1,000mA*2 (MAX), 500mA*4 (MAX)

UM2 & UM4 COMPATIBLE WITH

IMR/Li-Ion/LiFePO4: 10440, 14500, 14650, 16500, 16340 (RCR123), 16650, 17350, 17500, 17650, 17670, 17700, 18350, 18490, 18500, 18650, 18700, 20700, 21700, 22500, 22650, 25500, 26500, 26650, 26700
NiMH/Ni-Cd: AA, AAA, AAAA, C, D

▶ UMS2 **2 BATTERY SLOTS** **USB CHARGING**

Intelligent USB Dual-Slot Superb Charger

UMS2 SPEC	
Compatible with	IMR/Li-Ion/LiFePO4/Ni-MH/Ni-Cd
Input	DC 5V/2A 9V/2A 18W (MAX)
Output voltage	4.35V±1% / 4.2V±1% / 3.7V±1% / 1.48V±1%
Output current	QC Mode: 3,000mA*1 (MAX), 2,000mA*2 (MAX) Standard Mode: 2,000mA*1 (MAX), 1,000mA*2 (MAX)



▶ UMS4 **4 BATTERY SLOTS** **USB CHARGING**

Intelligent USB Four-Slot Superb Charger

UMS4 SPEC	
Compatible with	IMR/Li-Ion/LiFePO4/Ni-MH/Ni-Cd
Input	DC 5V/2A 12V/1.5A 18W (MAX)
Output voltage	4.35V±1% / 4.2V±1% / 3.7V±1% / 1.48V±1%
Output current	QC Mode: 3,000mA*1 (MAX), 2,000mA*2 (MAX), 1,000mA*4 (MAX) Standard Mode: 2,000mA*1 (MAX), 1,000mA*2 (MAX), 500mA*4 (MAX)



UMS2 & UMS4 COMPATIBLE WITH

IMR/Li-Ion/LiFePO4:
10440, 14500, 14650, 16500, 16340 (RCR123), 16650, 17350, 17500, 17650, 17670, 17700, 18350, 18490, 18500, 18650, 18700, 20700, 21700, 22500, 22650, 25500, 26500, 26650, 26700
NiMH/Ni-Cd: AA, AAA, AAAA, C, D

▶ UI1 **1 BATTERY SLOT** **USB CHARGING**

Portable USB Battery Charger

UI1 SPEC	
Compatible with	IMR/Li-Ion
Input	DC 5V/1A 5W
Output voltage	4.2V±1%
Output current	1000mA (MAX)



▶ UI2 **2 BATTERY SLOTS** **USB CHARGING**

Portable Dual-Slot USB Battery Charger

UI2 SPEC	
Compatible with	IMR/Li-Ion
Input	DC 5V/2A 10W
Output voltage	4.2V±1%
Output current	1000mA*2 (MAX)



UI1 & UI2 COMPATIBLE WITH

IMR/Li-Ion: 10340, 10350, 10440, 10500, 12340, 12500, 12650, 13450, 13500, 13650, 14430, 14500, 14650, 16500, 16340 (RCR123), 16650, 17350, 17500, 17650, 17670, 18350, 18490, 18500, 18650, 20700, 21700, 22500, 22650, 25500, 26500, 26650



▶ F4 **4 BATTERY SLOTS**

Flexible Battery Charger & Power Bank



F4 SPEC	
Compatible with	Li-Ion / IMR
Input	DC 5V/2A
Capacity	60Wh (MAX)
Output voltage	4.2V±1% (BATTERY)/5V±5% (USB)
Output current	2*1A, 4*0.5A (Battery)/2*2A (USB)

F4 COMPATIBLE WITH

Li-Ion / IMR: 18650





► i8

8 BATTERY SLOTS

Eight-Slot Intellicharger

i8 SPEC

Compatible with	IMR/Li-Ion/LiFePO4/Ni-MH/Ni-Cd
Input	AC 100-240V 50/60Hz 0.6A(MAX) 30W DC 12V 3A
Output voltage	Battery: 4.2V±1% / 1.48±1%/USB: 5V±5%
Output current	1.5Ax2, 1Ax4, 0.75Ax4, 0.5Ax8 USB:5V*2.1A

i8 COMPATIBLE WITH

Li-ion / IMR:
10340, 10350, 10440, 10500, 12340, 12500, 12650, 13450, 13500, 13650, 14350, 14430, 14500, 14650, 16500, 16340(RCR123), 16650, 17350, 17500, 17650, 17670, 18350, 18490, 18500, 18650, 22500, 22650, 25500, 26500, 26650
Ni-MH/Ni-Cd: AA, AAA, C, D

► NEW i2

2 BATTERY SLOTS

Dual-Slot Intellicharger

NEW i2 SPEC

Compatible with	IMR/Li-Ion/LiFePO4/Ni-MH/Ni-Cd
Input	AC 100-240V 50/60Hz 0.25A(max) 8W DC 9-12V
Output voltage	4.35V ±1% / 4.2V±1% / 3.7V ±1% / 1.48V ±1%
Output current	500mA x2 / 1000mA x1



► NEW i4

4 BATTERY SLOTS

Four-Slot Intellicharger

NEW i4 SPEC

Compatible with	IMR/Li-Ion/LiFePO4/Ni-MH/Ni-Cd
Input	AC 100-240V 50/60Hz 0.25A(max) 10W DC 9-12V 1A
Output voltage	4.35V±1%/4.2V±1% / 3.7V±1%/1.48V±1%
Output current	1.5Ax1 / 0.75Ax2 / 0.5Ax2 / 0.375Ax4



NEW i2 & NEW i4 COMPATIBLE WITH

Li-ion/IMR/LiFePO4:
10340, 10350, 10440, 10500, 12340, 12500, 12650, 13450, 13500, 13650, 14350, 14430, 14500, 14650, 16500, 16340 (RCR123), 16650, 17350, 17500, 17650, 17670, 18350, 18490, 18500, 18650, 22500, 22650, 25500, 26500, 26650
Flat-topped Batteries: 18700, 20700, 21700
Ni-MH/Ni-Cd: AA, AAA, AAAA, C, D

► Q4

4 BATTERY SLOTS

Four-Slot Li-ion Battery Quick Charger

Q4 SPEC

Compatible with	IMR/Li-Ion/LiFePO4/Ni-MH/Ni-Cd
Input	DC 12V 2000mA 24W
Output voltage	4.2V±1%
Output current	2A*2, 1A*4



► Q6

6 BATTERY SLOTS

Six-Slot Li-ion Battery Quick Charger

Q6 SPEC

Compatible with	IMR/Li-Ion/LiFePO4/Ni-MH/Ni-Cd
Input	DC 12V 2000mA 24W
Output voltage	4.2V±1%
Output current	2A*2, 1A*4, 0.65A*6



Q4 & Q6 COMPATIBLE WITH

Li-ion/IMR:
10340, 10350, 10440, 10500, 12340, 12500, 12650, 13450, 13500, 13650, 14350, 14430, 14500, 14650, 16500, 16340(RCR123), 16650, 17350, 17500, 17650, 17670, 18350, 18490, 18500, 18650, 22500, 22650, 25500, 26500, 26650
Flat-topped Batteries:
17700, 18700, 20700, 21700, 22700, 26700

► D2

2 BATTERY SLOTS

Dual-Slot Digicharger

D2 SPEC

Compatible with	IMR/Li-Ion/LiFePO4/Ni-MH/Ni-Cd
Input	AC 100-240V 50/60Hz 0.25A(MAX), DC 12V 1A
Output voltage	4.2V ±1% / 3.7V ±1% / 1.48V ±1%
Output current	500mA x 2



► D4

4 BATTERY SLOTS

Four-Slot Digicharger

D4 SPEC

Compatible with	IMR/Li-Ion/LiFePO4/Ni-MH/Ni-Cd
Input	AC 100-240V 50/60Hz 0.35A(MAX), DC 12V 1A
Output voltage	4.2V ±1% / 3.7V ±1% / 1.48V ±1%
Output current	375mA x 4 / 750mA x 2



D2 & D4 & Q6 COMPATIBLE WITH

Li-ion / IMR / LiFePO4:
26650, 22650, 18650, 17670, 18490, 18350,
17500, 14500, 16340(RCR123), 10440
Ni-MH/Ni-Cd: AA, AAA, AAAA, C

► SC4

4 BATTERY SLOTS

Four-Slot Superb Charger

SC4 SPEC	
Compatible with	IMR/Li-Ion/LiFePO4/NI-MH/NI-Cd
Input	AC 100-240V 50/60Hz 1A(MAX) 40W DC 12V 3A
Output voltage	Battery: 4.35V±1%/ 4.2V±1%/ 3.7V±1%/1.48V±1% USB: 5V±5%
Output current	3A*2(MAX) 1.5A*4 USB:2.1A(MAX)



► SC2

2 BATTERY SLOTS

Dual-Slot Superb Charger

SC2 SPEC	
Compatible with	IMR/Li-Ion/LiFePO4/NI-MH/NI-Cd
Input	AC 100-240V 50/60Hz 0.9A(MAX) 30W DC 12V 2.5A
Output voltage	Battery: 4.35V±1% / 4.2V ±1% / 3.7V ±1% / 1.48V ±1% USB: 5V
Output current	3A+2A MAX USB:2.1A



SC4 & SC2 COMPATIBLE WITH

Li-ion/IMR/LiFePO4:
10340, 10350, 10440, 10500, 12340, 12500, 12650, 13450, 13500, 13650, 14350, 14430, 14500, 14650, 16500, 16340 (RCR123),
16650, 17350, 17500, 17650, 17670, 18350, 18490, 18500, 18650, 22500, 22650, 25500, 26500, 26650
NI-MH/NI-Cd: AA, AAA, AAAA, C, D

The LC10 is a lightweight and portable magnetic USB charger with charging, discharging and lighting functions. It is compatible with almost all kinds of cylinder Li-ion batteries, which can charge devices with 2.0 USB and iOS devices via the charging port. It is ideal for charging the batteries anywhere anytime with the portable USB plug.

► LC10

Outdoor Magnetic Charger

LC10 SPEC	
Compatible with	IMR/Li-Ion/LiFePO4/NI-MH/NI-Cd
Input	DC 5V ≥0.5A
Output voltage	Battery: 4.2V±1% USB: 5V±5%
Output current	1A MAX

LC10 COMPATIBLE WITH

Li-ion/IMR:
12650, 13450, 13500, 13650, 14350, 14430, 14500, 14650, 16500, 16340(RCR123),
16650, 17350, 17500, 17650, 17670, 17700, 18350, 18490, 18500, 18650, 18700,
20700, 21700, 22500, 22650, 22700, 25500, 26500, 26650, 26700 (Compatible
with 3.6V or 3.7V cylinder rechargeable Li-Ion battery)



NOTE: Battery is not included.



► NFF01

Flavor Factory

NFF01 SPEC	
Input	DC 12V 3000mA MAX
Motor	70-1200 rpm
Motor output	3W
Heat output	30W
Control precision	5°C/ 10°F
Operating duration	SMM: continuous PMM: 14 days

► VCL10

Multifunctional 3-in-1 Car Charger

VCL10 SPEC	
Input	DC 12V 2.5A(MAX)
Output	DC 5V 2.4A(MAX)
Quick Charge 3.0	DC 3.6V-12V 2.4A(MAX)
Quick Charge 2.0	DC 5V/9V/12V 2.4A(MAX)

Asia Outdoor Gold Winner



► V2

In-Vehicle Battery Charger

V2 SPEC	
Compatible with	IMR/Li-Ion/LiFePO4/NI-MH/NI-Cd
Input	DC 12V 42W(MAX)
Output	Battery: 4.2V±1%/3A*2(MAX) 1.48V±1%/2A*2 (MAX) USB: 5V±5% 1A*2/2.1A*1 (MAX)

V2 COMPATIBLE WITH

Li-ion/IMR:
14500, 14650, 16500, 16340(RCR123), 16650, 17350, 17500, 17650, 17670, 18350,
18490, 18500, 18650, 22500, 22650, 25500, 26500, 26650,
Unprotected batteries: 17700, 18700, 20700, 21700, 22700, 26700
NI-MH(NiCd): AA, C





▶ 21700 Intelligent Battery System

The 21700 Intelligent Battery System is an innovative power solution consisting of the NITECORE 21700 I Series Battery, the ML21 Magnetic Light, the MC21 Magnetic Charger and the MPB21 Magnetic Power Bank. Designed to offer a consistent power source and to minimize the burden in the outdoor activities, it can easily provide the necessary light source and transfer power between different devices on the go.



▶ NL2140i

NL2140i SPEC	
Specification	21700
Voltage	3.6V
Capacity	4000mAh 14.4Wh
Max Continuous Discharge	8A

▶ NL2150i

NL2150HPi SPEC	
Specification	21700
Voltage	3.6V
Capacity	5000mAh 18Wh
Max Continuous Discharge	8A

▶ NL2150HPi

NL2150HPi SPEC	
Specification	21700
Voltage	3.6V
Capacity	5000mAh 18Wh
Max Continuous Discharge	15A



▶ ML21

80 Lumens



▶ MC21

MC21 SPEC	
Input	5V=1A
Output	4.2V=1A (MAX)



▶ MPB21

MPB21 SPEC	
Input	5V=2A
Output	4.2V±1% (BATTERY) / 5V±5% (USB)2A (MAX)



▶ F2li



F2li SPEC	
Input	5V=2A / 9V=2A
Output	Battery: 4.2V=4A (MAX) USB-C: 5V=2.4A / 9V=2A / 12V=1.5A

▶ IMR Batteries



MODEL	SPECIFICATION	CAPACITY	DISCHARGE CURRENT
2500mAh 35A	18650	2500mAh	35A
2600mAh 40A	18650	2600mAh	40A
3100mAh 35A	18650	3100mAh	35A

Specially designed for vaping industry, featuring high performance and high drain, IMR batteries can be charged by multiple Nitecore chargers.

▶ Rechargeable Li-ion Batteries



NITECORE rechargeable Li-ion batteries feature higher energy intensity, better power storage and longer runtime compared to other batteries, and environmental-friendly that can be recharged for over 500 times.

MODEL	SPECIFICATION	CAPACITY
NL1823	18650	2300mAh
NL1826	18650	2600mAh
NL1832	18650	3200mAh
NL1834	18650	3400mAh
NL1835	18650	3500mAh
NL166	16340	650mAh
NL1485	14500	850mAh
NL2140	21700	4000mAh
NL2145	21700	4500mAh
NL2150	21700	5000mAh

▶ Micro-USB/USB-C Rechargeable Li-ion Batteries



With a built-in Micro-USB / USB-C port, it is convenient to charge the rechargeable Li-ion batteries via a USB cable.

MODEL	SPECIFICATION	CAPACITY
NL1826R	18650	2600mAh
NL1834R	18650	3400mAh
NL1835R	18650	3500mAh
NL1665R	16340	650mAh
NL1476R	14500	750mAh
NL1829RLTP	18650	2900mAh
NL2140R	21700	4000mAh
NL2150R	21700	5000mAh
NL2150HPR	21700	5000mAh

▶ High Performance Batteries



Specially designed for high performance products, featuring high drain and excellent performance, resistant to extreme conditions, capable of driving high performance products to the ultimate performance.

MODEL	SPECIFICATION	CAPACITY	DISCHARGE CURRENT
NL1835HP	18650	3500mAh	8A
NL1829LTHP	18650	2900mAh	8A
IMR18650 3100MAH(FOR IMR2)	18650	3100mAh	10A
NL2140HP	21700	4000mAh	15A
NL2145HP	21700	4500mAh	15A
NL2150HP	21700	5000mAh	15A
NL2150HPi	21700	5000mAh	15A
NL2150HPR	21700	5000mAh	15A

▶ Low-temperature Resistant Batteries



MODEL	SPECIFICATION	CAPACITY	DISCHARGE CURRENT
NL1829LTP	18650	2900mAh	4A
NL1829LTHP	18650	2900mAh	8A
NL1829RLTP	18650	2900mAh	5A

Specially designed for freezing environment like high altitude area or severe cold area, it is low temperature resistant even at the lowest of -40°C.

T SERIES

T Series is a collection of mini keychain lights designed for everyday carry. Small yet powerful, each light comes with powerful features in an extremely mini package. With a built-in Li-Ion battery and a Micro-USB / USB-C port, it offers flexible charging options and ultimate convenience of use, making it the best EDC gadget that you will carry every day.

TINI2



500 Lumens
89 Meters

- 2 x OSRAM P8 LEDs
- Built-in Li-Ion Battery

Dual-Core Intelligent Keychain Light

Features

- Dual side switch design
- Multifunctional OLED real-time display
- Advanced Power Cut-Off (APC) Technology
- 2 user modes available
- 2 lockout modes available



TIP SE



700 Lumens
90 Meters

- 2 x OSRAM P8 LEDs
- Built-in Li-Ion Battery

Dual-Core Metallic Keychain Light

Features

- 2 user modes available
- Power indicators beneath the switches indicate the remaining battery power



TINI SS



TINI Cu

380 Lumens
64 Meters

- CREE XP-G2 S3 LED
- Built-in Li-Ion Battery

Mini Metallic Keychain Light



THUMB

85 Lumens
26 Meters

- 2 x High Performance LEDs
- Built-in Li-Ion Battery

Portable and Tilttable Work Light

THUMB LED



45 Lumens
24 Meters
500 mW

- 2 x High Performance LEDs
- Built-in Li-Ion Battery

Portable and Tilttable Work Light Law Enforcement Version



► T4K



4000 Lumens 209 Meters

- 4 x CREE XP-L2 V6 LEDs
- Built-in Li-ion Battery



Quad-Core Intelligent Keychain Light

► TUP



1000 Lumens 180 Meters

- CREE XP-L HD V6 LED
- Built-in Li-ion Battery

Most Innovative Flashlight 2019 Best of SHOT Show



Multiple Colors Available



Revolutionary Intelligent Pocket Light



Battery Level & Voltage Brightness Level User Mode Runtime Remaining

► TUBE V2.0



55 Lumens 25 Meters

- High Performance LED
- Built-in Li-ion Battery

► TUBE UV

Ultraviolet Light Version



Multiple Colors Available



Tiny USB Keychain Light

► TIKI / TIKI LE



► TIKI GITD / TIKI GITD BLUE

300 Lumens 71 Meters

- OSRAM P8 LED
- TIKI / TIKI GITD: Auxiliary High CRI + UV LEDs
- TIKI LE: Auxiliary Red + Blue LEDs
- Built-in Li-ion Battery



TIKI LE: Signal Light Version

Mini Futuristic Keychain Light

► TIKI UV



1000 mW

- Luminus SST-10-UV LED
- 2 x Auxiliary High CRI White LEDs
- Built-in Li-ion Battery



TIKI GITD: Glow-in-the-dark Version

► TIP2

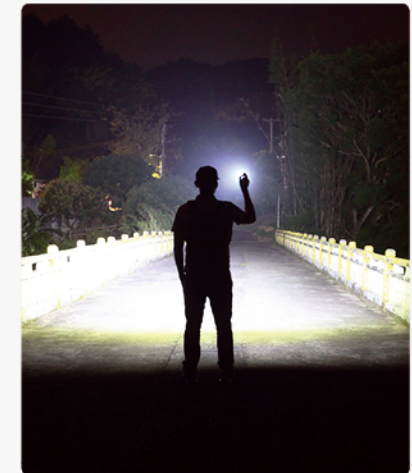


720 Lumens 93 Meters

- 2 x CREE XP-G3 S3 LEDs
- Built-in Li-ion Battery



Dual-Core Magnetic Keychain Light



► TIP CRI



240 Lumens 56 Meters

- NICHIA 219B LED
- Built-in Li-ion Battery



Multiple Colors Available



High CRI Metallic Keychain Light



BlowerBaby™

The First Electronic Photography Blower in the World

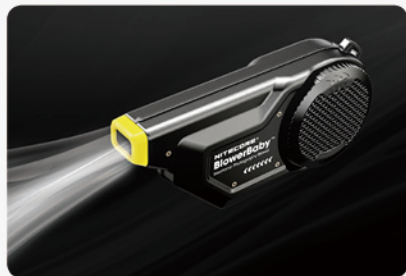
- 
 USB-C
Rechargeable
- 
 Electronically
Controlled
- 
 Max Wind Speed of
70 km/h (43.5 mph)
- 
 Unidirectional
Air Intake
- 
 Aluminum Alloy
Construction

70 km/h Strong Wind (43.5 mph)
= Beaufort Wind Force 8 (Gale)

BlowerBaby™ **2 Times** ↑

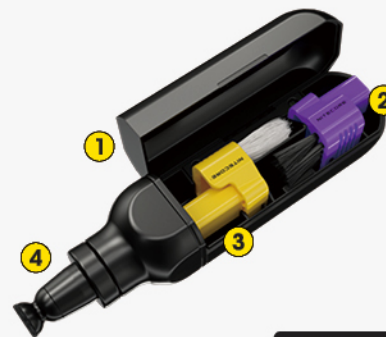
 70 km/h (43.5 mph)

Conventional Blower
 35 km/h (21.7 mph)



► Your Best Cleaning Partner

Camera Cleaning Pen

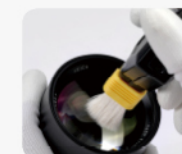


- 1 Magnetic Storage Compartment for Cleaning Brushes
- 2 Camera Body Cleaning Brush
- 3 Lens Cleaning Brush
- 4 Magnetic Carbon Cleaning Tip

Comprehensive Cleaning Solutions



Basic Cleaning



Lens Cleaning



Sensor Cleaning

*DO NOT use the Cleaning Brushes when cleaning the camera sensors

Daily Cleaning



Model Kits & Action Figures



Watches & Jewelry



Coffee Grinders



Musical Instruments



Lens Cleaning Kit

- Lens Cleaning Fluid (30mL / 1 fl oz)
- Microfiber Lens Cleaning Cloth x 5 pcs



Sensor Cleaning Kit

- Sensor Cleaning Fluid (10mL / 0.34 fl oz)
- Sensor Cleaning Swab x 10 pcs

► **Titanium / Aluminum Collection**



NTP48
Hollow Hexagonal Titanium Alloy Mechanical Pencil



NTP40
Titanium Alloy Mechanical Pencil



NTP31
Aluminum Alloy Bolt Action Tactical Pen



NTP30
Titanium Bolt Action Tactical Pen



NTP21
Multi-functional Tactical Pen



NTP20
Multi-functional Titanium Tactical Pen



NTP10
Titanium Tactical Pen



NTK10
Titanium Utility Knife



NTK07
Titanium Alloy Ultra-Slim Unibody Knife



NTK05
Titanium Keychain Knife



NSH10
Titanium Alloy Multiuse Snap Hook

► **Outdoor Emergency Whistle**



NWE30
Aluminum Alloy Electronic Emergency Whistle



NWS10
Titanium Alloy Unibody Emergency Whistle



► Multi-purpose Backpack



BP20

Features

Reinforced handheld grip
Quick and convenient

Warning light mounting point
Ensures safety for night walking and riding

Widget area
Attaching nametapes or reflective patches

Lengthened pull tab
Glove-friendly

Compression strap
· To streamline the load and prevent it from shifting
· With hook-and-loop for storage

Detachable MOLLE system
For hanging additional bags, pouches or gears

Side nylon webbings
For hanging pouch or gears



Winner of Small Backpacks of TACTICAL GEAR Magazine



Ventilated back enhances air circulation and lightens the burden

BP25



► Modular Backpack



MP20

MP25

MP30

Features

- Excellent and flexible carrying capability in harsh environments
- Wearproof and water resistant 500D Nylon fabric
- Laser cut MOLLE System for modular extensions
- Interior design with combination of loop surface and MOLLE System
- Outstanding carrying system increases the ergonomic comfort
- Innovative dual duct channel design for the drink tube / charging cable on top of both sides
- Premium YKK zippers
- UTX Duraflex buckles
- Optional inner and outside modules available



► Excursion Bag

NEB10



NEB20



NEB30



► Range Bag



NRB10

► Tactical Case



NTC10



► Holster

NCP40, NCP30

The holsters are lightweight and durable, with convenient hook and loop fastener and modular design that enables fast mounting on MOLLE systems.



► Headband

HB02, HB03

Strengthened sewing design provides secure fit for headlamp, a hidden silicone gripper prevents slip by sweat.



► Waterproof Dry Bags



WDB05



WDB20



Ergonomic Design



Reliable Water Resistance



Secured Fastening System

► Tactical Belt Pads

MB LW MB SL



► Running Belt

BLT10



► Soft Flask



► Bandana



► Headwear

NDH20

Boonie Hat



NDH10

Combat Cap

