

NITECORE®

OUTDOOR ELECTRONICS 

NITECORE®

SYSMAX CORP.
www.nitecore.com

SYSMAX Innovations Co., Ltd.

24/F, TCL Plaza, No. 18 Haizhou Road, Haizhu District, Guangzhou,
510335, Guangdong, China
Tel: +86 20 83862000 Fax: +86 20 83882723
E-mail: info@nitecore.com



PRODUCT CATALOG

KEEP INNOVATING

CONTENTS

2 About NITECORE

- 4 Brand Overview
- 5 Awards
- 6 Brand Image

8 Outdoor Electronics

- 10 EMR Series
- 18 NEF Series
- 20 AP Series
- 21 AC Series

22 Portable Power

- 24 NB Series
- 25 CARBO Series
- 25 NC Series
- 26 SUMMIT Series
- 27 NPB Series

28 Outdoor Power

- 34 NES Series
- 36 NPS Series
- 37 FSP Series

38 Charger

46 Accessories

50 Carry Gear

60 Specifications



www.nitecore.com



NITECORE®

ABOUT NITECORE

MK2



2007

UM10



2011

F2



2017

F4



2019

NES1200



2021

EMR06

Portable Electronic Multipurpose Repeller



2023

i4



2007

NEW i2



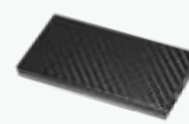
2011

i8



2017

NB10000



2019

EMR10



2021

2022



BRAND OVERVIEW

Inspired by the notion to "Keep Innovating" with the industry-leading innovative power for 16 years, NITECORE is the first brand to achieve a grand slam milestone in the industries of professional lighting and chargers to receive the German iF Design Award, Red Dot Design Award, the Japanese G-Mark (Good Design) and the American IDEA, as well as Gold Winners of the ISPO Award and Outstanding Outdoor globally recognized in the outdoor industry. We specialize in product lines varying from professional lighting to outdoor electronics, camera cleaning solutions, and carry gear specially designed for law enforcement and military departments, industrial corporations and outdoor enthusiasts worldwide.

NITECORE is dedicated to developing ultra lightweight and intelligent outdoor electronics for outdoor enthusiasts worldwide, utilizing advanced technologies, innovative design, as well as premium materials to ensure excellent performance while reducing the burden on users. Our mission is to provide reliable and efficient outdoor products that allow users to explore and enjoy the outdoors with the perfect balance between performance and convenience.

Establishment

2007

Countries and Regions

130⁺

Global Patents and Certifications

5000⁺

Clients and Users

10M⁺

PRODUCT AWARDS

Established in 2007, NITECORE has long been at the forefront of technological advancement in portable illumination. Through its tremendous research and development capacity, NITECORE has become the first brand in the industries of professional lighting and chargers to receive all four grand international design prizes including the American IDEA, the German iF Design Award, Red Dot Design Award and the Japanese G-Mark (Good Design), in addition to the worldly famous ISPO Award in the outdoor industry. NITECORE products are internationally recognized in over 130 countries.

 <p>EMR10 Portable Electronic Multipurpose Repeller</p> <p>FEATURED FINALIST 2021</p>	 <p>SUMMIT 10000 Low Temperature Resistant Carbon Fiber Power Bank</p> <p>FEATURED FINALIST 2021</p>
 <p>TM20K Ultra High Performance Tactical Searchlight</p> <p>reddot winner 2022</p>	 <p>Camera Sensor Cleaning Solution</p> <p>reddot winner 2022</p>
 <p>BlowerBaby™ Electronic Air Blower Solution</p> <p>iF DESIGN AWARD 2022 reddot winner 2022</p>	 <p>SCL10 2-in-1 Smart Camera Light & Power Bank</p> <p>TIPA World Awards 2021 Best Power Accessory</p>
 <p>NES300 Portable Outdoor Power Station</p> <p>kapok</p>	 <p>TINI2 Dual-Core Intelligent Keychain Light</p> <p>kapok</p>
 <p>NPS600 Portable Outdoor Power Station</p> <p>kapok iF DESIGN AWARD 2021</p>	 <p>NWE30 Electronic Emergency Whistle</p> <p>GOOD DESIGN AWARD 2021 FEATURED FINALIST 2021</p>
 <p>TIKI / TIKI LE Mini Futuristic Keychain Lights</p> <p>kapok iF DESIGN AWARD 2021</p>	 <p>NPS200 / NPS400 Portable Outdoor Power Stations</p> <p>ISPO Award 2020 Winner</p>
 <p>21700 Intelligent Battery System</p> <p>FINALIST 2020</p>	 <p>HUGO & NPBI E-focus Elite Headlamp Set</p> <p>ISPO Award 2021 Winner</p>
 <p>LA10 / LA10 CRI Lipstick Camping Light</p> <p>GOOD DESIGN iF DESIGN AWARD 2021</p> <p>ISPO AWARD</p>	 <p>HC65 & F4 Triple Output Headlamp & Power Bank</p> <p>Outstanding Outdoor Gold Winner 2019 by ISPO Award</p>

GLOBAL PRESENCE

NITECORE has played an essential role in various organizations around the globe and has made great contributions to the outdoor and tactical industry. By now we are the active members of the following organizations:



The Portable Lights American Trade Organization (PLATO)



National Shooting Sports Foundation (NSSF)



High and New Technology Enterprise (HNTE)



Provincial Excellent Enterprise of Guangdong



China Sporting Goods Federation (CSGF)

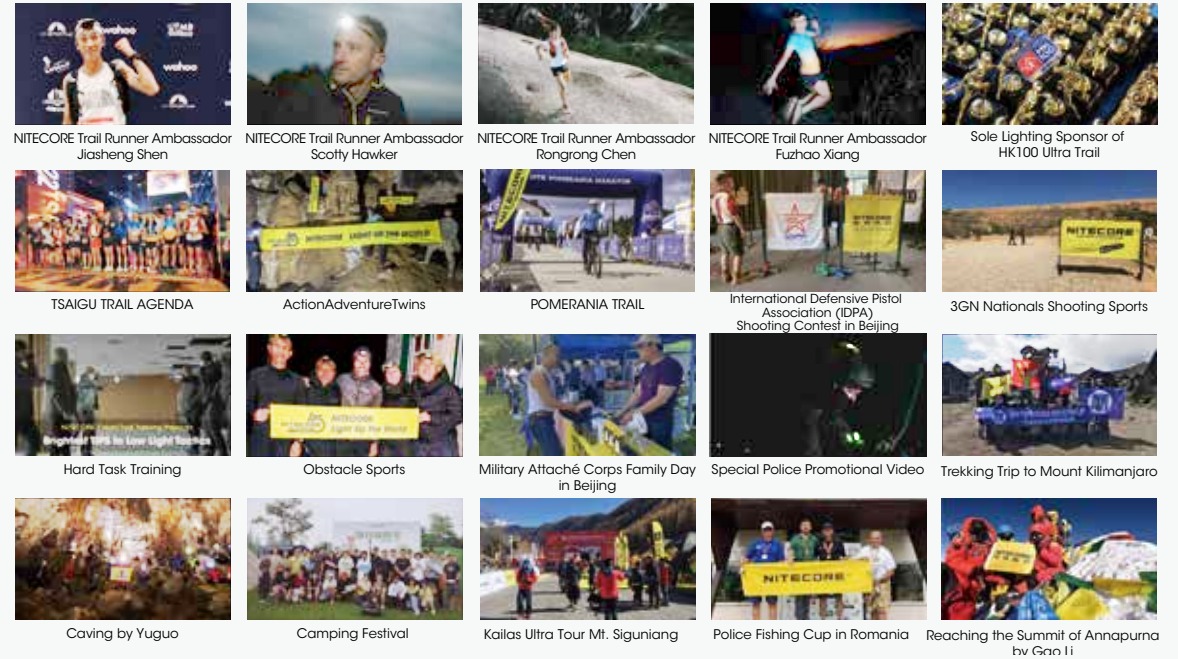
MAGAZINE

Media and Press is also an important tool for us to introduce the NITECORE brand to users worldwide.



Svět outdooru	Sailing
Strelecka Revue	Rifle Firepower
SAM	Tir Mag
Myslivost	Jours de Chasse
Special Weapons	Planete Chasse
Outside Magazine	Chasseur Sanglier
WAPENMAGAZINE	Le Chasseur Français

AMBASSADORS & SPONSORED EVENTS



ON-SCREEN MOMENTS

Warriors of Future



TIP CRI

The Wandering Earth 2



NPS200

The Mummy



TM28

Resident Evil 6



TM26

Agents of S.H.I.E.L.D.



TM26GT

Death Wish



Various Products

Shooter



MT40/MT40GT

Mysteries of the Abandoned



HC60

Note: The screenshots and posters are for reference only. The copyright belongs to their respective production companies.



NITECORE®

OUTDOOR ELECTRONICS



EMR Series

With the innovative heating system and safe activating method, the NITECORE EMR Series is specially designed for outdoor enthusiasts to repel mosquitoes or pests effectively. The EMR Series products are powered by the rechargeable Li-ion battery, minimizing the carbon footprint while providing users with a long-lasting protection zone.



EMR Series



Electronic Repeller

Can be recharged at any time for long-term use while it is safe, green, and efficient



Conventional Repeller



Fuel Powered

There is a need to carry and replace fuel, which is high consumption, not eco-friendly, and unapproved by airlines.

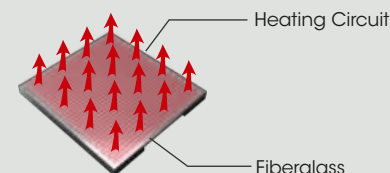


FCB Heating System



(Utility Model Patent No.: 2022225158067)

Efficient and Safe



Single-layer Structure
Lower Heat Loss
Upward Thermal Conduction

Ultrasonic Function



Ideal for repelling pests, such as insects, mice, snakes, cockroaches, and more

11ft – 20ft Protection Zone



Note: The data may vary due to different products.

Professional Outdoor Mosquito Repellent Mat

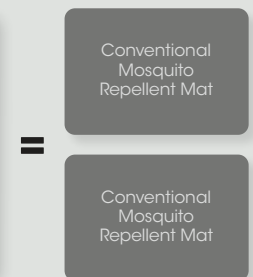
200%

Mosquito Repellent Effect

Each Lasting 6 Hours



Double Size



Double Usage



Portable Electronic Multipurpose Repeller

Dimensions: 167mm x 59.5mm x 33.5mm (6.6" x 2.3" x 1.3")
 Weight: 135g±5g (4.76 oz±0.1 oz)

Features



FCB Heating System



OLED Real-time Display

Indoor / Outdoor Mode Ultrasonic Mode



Runtime Charging / Discharging Power

Charging / Discharging Function

Heat Insulation Guard



Ultrasonic Function
 25kHz 40kHz

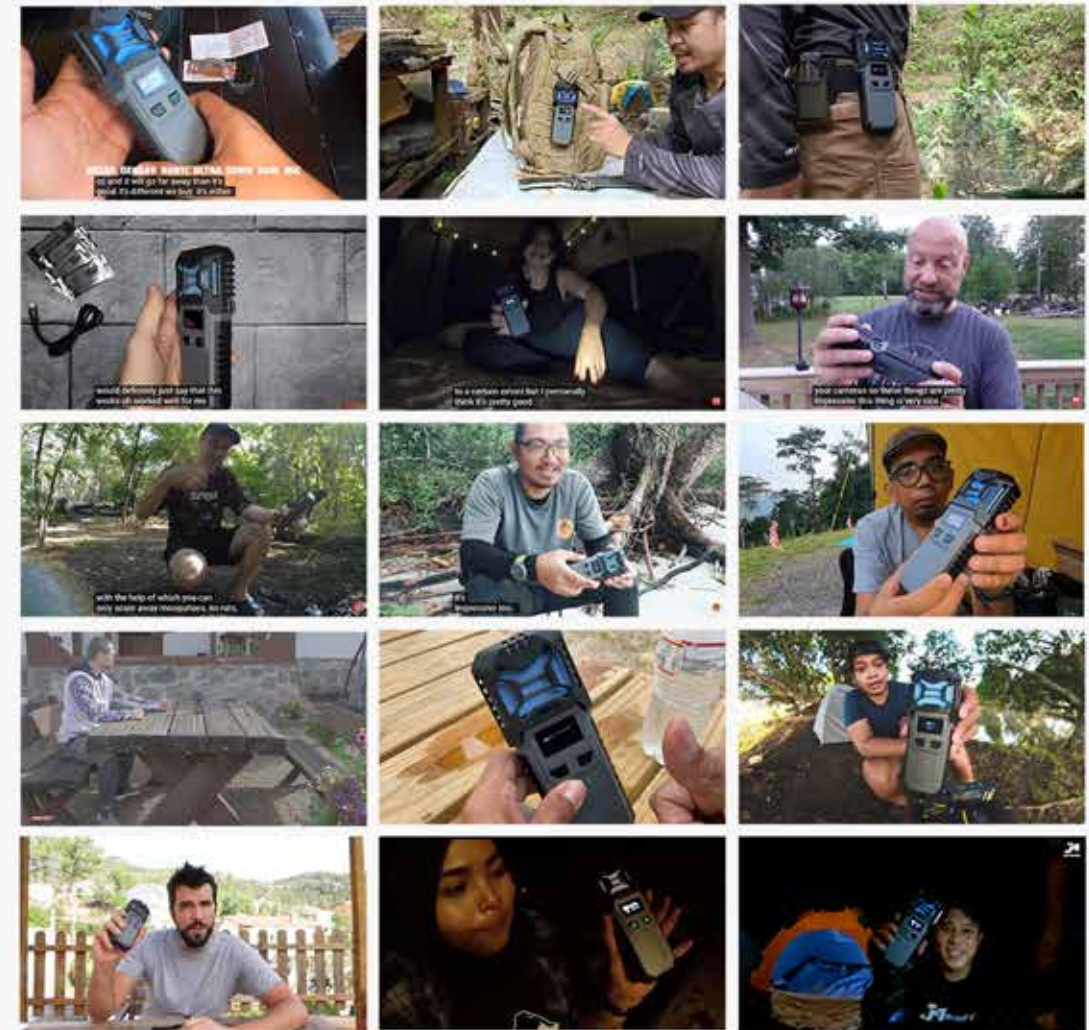


18W Input & Output



WORLDWIDE RECOGNITION

EMR10 PORTABLE ELECTRONIC MULTIPURPOSE REPELLER



NRH10

Repeller Holster
 Specially Designed for EMR10
 (Optional)

EMR10 SPEC

Input	5V=2.4A / 9V=2A (18W MAX)
Output	5V=2.4A / 9V=2A / 12V=1.5A (18W MAX)
Rated Capacity	10,000mAh 36Wh MAX
Runtime	12h MAX
Ultrasound Frequency	25kHz, 40kHz
Modes	Indoor Mode: 11ft Protection Zone
	Outdoor Mode: 16ft Protection Zone



EMR20

Portable Electronic Multipurpose Repeller

Dimensions: 135mm x 48.8mm x 31mm (5.3" x 1.9" x 1.2")
 Weight: 227g±5g (8 oz±0.1 oz)

EMR20 SPEC

Input	5V=2.4A / 9V=2A (18W MAX)
Output	5V=2.4A / 9V=2A / 12V=1.5A (18W MAX)
Rated Capacity	6,400mAh 5V (TYP 1A)
Capacity	10,000mAh 36Wh
Runtime	12h MAX
Modes	Indoor Mode: 11ft Protection Zone
	Outdoor Mode: 16ft Protection Zone



- Built-in 10,000mAh Li-ion Battery
- 18W Input & Output

EMR30

Electronic Multipurpose Repeller

Dimensions: 121mm x Ø 93mm (4.8" x Ø 3.7")
 Weight: 576g±5g (20.3 oz±0.1 oz)

EMR30 SPEC

Input	5V=2.4A / 9V=2A (18W MAX)
Output	5V=2.4A / 9V=2A / 12V=1.5A (18W MAX)
Rated Capacity	6,400mAh 5V (TYP 1A)
Capacity	10,400mAh 37.44Wh MAX
Runtime	12h MAX
Ultrasound Frequency	40kHz
Modes	Indoor Mode: 11ft Protection Zone
	Outdoor Mode: 20ft Protection Zone

Ultrasonic Function
40kHz



- Built-in 10,400mAh Li-ion Battery
- 18W Input & Output

NEW EMR05

Portable Electronic Multipurpose Repeller

Dimensions: 63.8mm x 52.7mm x 26.8mm
 (2.51" x 2.07" x 1.06")
 Weight: 39g±5g (1.38 oz±0.1 oz)

Features

- MOLLE System Bracket Included
- FCB Heating System (Utility Model Patent No.: 2022225158067)

EMR05 SPEC

Input	5V=2A
Protection Zone	16ft

2 Colors Available



Powered by a USB Source





NEW **EMR06**
Portable Electronic Multipurpose Repeller

Dimensions: 55mm x 91.5mm x 28.3mm
 (2.17" x 3.60" x 1.11")
 Weight: 71g±5g (2.50 oz±0.1 oz)

Features

- MOLLE System Bracket Included
- FCB Heating System
 (Utility Model Patent No.: 2022225158067)

EMR06 SPEC

Input	5V-1A (5W MAX)
Capacity	1,800mAh 6.66Wh
Runtime	3.5h MAX
Protection Zone	16ft

2 Colors Available



Built-in 1,800mAh Li-ion Battery



NEW **EMR30 SE**

Electronic Multipurpose Repeller

Dimensions: 63.3mm x 62.3mm x 49.4mm
 (2.49" x 2.45" x 1.94")
 Weight: 86g±5g (3.03 oz±0.1 oz)

EMR30 SE SPEC

Input	5V-2A (10W MAX)
Modes	Indoor Mode: 11ft Protection Zone Outdoor Mode: 16ft Protection Zone



Powered by a USB Source

NEW **EMR40**

Electronic Multipurpose Repeller

Dimensions: 61mm x 90mm x 40mm
 (2.40" x 3.54" x 1.57")
 Weight: 229g±5g (8.08 oz±0.1 oz)

EMR40 SPEC

Input	5V-2A (10W MAX)
Capacity	7,800mAh 28Wh
Runtime	10h MAX
Modes	Indoor Mode: 11ft Protection Zone Outdoor Mode: 16ft Protection Zone



MRM10 Professional Outdoor Mosquito Repellent Mats (Optional)

180 Hours Mosquito Protection



30 pcs / box



Conventional Mosquito Repellent Mat

Each Lasting 6 Hours

NEF Series

Feel the Breeze
Stay at Ease



Handheld / Hanging / Standing



HOT SALE

NEF10

Multifunctional Electric Fan

Dimensions: 194mm x 175mm x 345mm
(7.6" x 6.9" x 13.6")

Height: 345mm (13.6") (MAX)
275mm (10.8") (MIN)

Weight: 655g±5g (23.10 oz±0.18 oz)

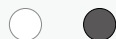


10,000mAh
Power Supply

NEF10 SPEC

Capacity	10,000mAh
Rated Input	5V=2A
Input Power	5V=2A
Rated Power	4W (MAX)
Output Power	5V=2A

2 Colors Available



LED Ring Light

NEW

NEF20

Portable Bladeless Neck Fan

Dimensions: 219.7mm x 202.7mm x 63mm
(8.65" x 7.98" x 2.48")

Weight: 304g±5g (10.72 oz±0.1 oz)

Features

- 360° Air Supply Angle
- 170 L/min Max Airflow Rate

NEF20 SPEC

Capacity	4,000mAh
Rated Input	5V=2A
Rated Power	4W MAX
Rotational Speed	3,900 RPM



AP Series

Pump Up Your Every Outdoor Adventure



NEW AP10

Ultra Compact Electric Air Pump

Dimensions: 80mm x 56mm x 51mm
(3.15" x 2.20" x 2.01")

Weight: 178g (6.28 oz)

Features

- 4 Nozzles Included
- Magnetic Tail Design

AP10 SPEC		
Input	5V=2A	
Rated Power	18W	
Battery Capacity	3,600mAh	
Inflation / Deflation Pressure	High Air Pressure	Low Air Pressure
	±4.5 kPa	±2.2 kPa
Airflow Rate	300 L/min	150 L/min
Brightness	300 Lumens MAX	



AC Series



Your Best Summer Partner
Unleash the Power of Cool

AC10

Portable Outdoor Air Conditioner

Dimensions: 583mm x 314mm x 260mm
(23.0" x 12.4" x 10.2")

Weight: 10kg (22 lbs)



AC10 SPEC	
Rated Voltage	24V DC
Rated Current	12.5A
Cooling Power	2550 BTU
Refrigerant	R134A
Sound Level	≤50 dB
Operation Temperature	3-42°C

- Patented Compressor
- Low Power Consumption
- Circuit Protection
- Convenient Grip
- Minimal Noise
- Straightforward Operation
- High Cooling Efficiency
- All-in-one
- Installation Free

Outdoor Gear & Equipment
Portable Power
Outdoor Power
Charger
Accessories
Carry Gear

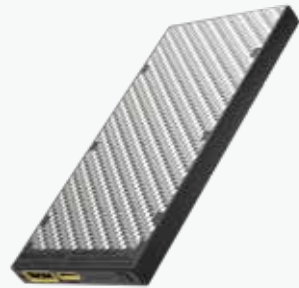
NITECORE®

PORTABLE POWER



NEW **NB10000 Silver**

Ultra Lightweight Energy Brick



Weight: 150g (5.29 oz)

NB10000 Silver SPEC

Cell	Li-ion
Capacity	10,000mAh 3.85V (38.5Wh)
Rated Energy	6,400mAh 5V (TYP 1A)
Input	USB-C: 5V=2.4A / 9V=2A
Output	USB-C: 5V=3A / 9V=2.22A / 12V=1.68A USB-A: 5V=3A / 9V=2A / 12V=1.5A Dual Ports: 5V=3A (MAX)
Dimensions	121.9mm x 59mm x 10.6mm (4.8" x 2.32" x 0.42")

HOT SALE **NB10000**

Ultra Lightweight Carbon Fiber Energy Brick



Weight: 150g (5.29 oz)

NB10000 SPEC

Cell	Li-ion
Capacity	10,000mAh 3.85V (38.5Wh)
Rated Energy	6,400mAh 5V (TYP 1A)
Input	USB-C: 5V=2.4A / 9V=2A
Output	USB-C: 5V=3A / 9V=2.22A / 12V=1.68A USB-A: 5V=3A / 9V=2A / 12V=1.5A Dual Ports: 5V=3A (MAX)
Dimensions	121.9mm x 59mm x 10.6mm (4.8" x 2.32" x 0.42")

HOT SALE **NB20000**

Ultra Lightweight Carbon Fiber Energy Brick

NB20000 SPEC

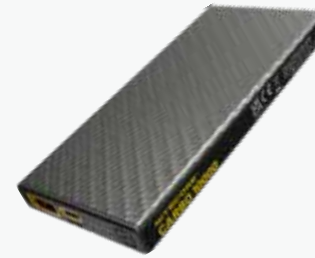
Cell	Li-ion
Capacity	20,000mAh 3.85V (77Wh)
Rated Energy	13,500mAh 5V (TYP 2A)
Input	USB-C (INPUT): 5V=2.4A / 9V=2A / 12V=1.5A (18W MAX) USB-C (IN): 5V=2.4A / 9V=3A / 12V=2.5A / 15V=2A / 20V=1.5A (30W MAX)
Output	USB-C (OUT 1): 5V=2.4A / 9V=3A / 12V=3A / 15V=3A / 20V=2.25A (45W MAX) USB-A (OUT 2 / OUT 3): 5V=2.4A / 9V=2A / 12V=1.5A Multi Ports Output: 5V=3A (MAX)
Dimensions	136.3mm x 60mm x 21.4mm (5.37" x 2.36" x 0.84")



Weight: 324.5g (11.45oz)

NEW **CARBO 10000**

Ultra Lightweight Carbon Fiber Power Bank



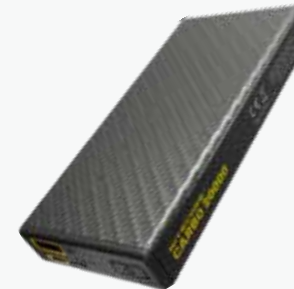
Weight: 157g (5.54 oz)

CARBO 10000 SPEC

Cell	Li-ion
Capacity	10,000mAh 3.85V (38.5Wh)
Rated Energy	6,400mAh 5V (TYP 1A)
Input	USB-C: 5V=2.4A / 9V=2A
Output	USB-C: 5V=3A / 9V=2.22A / 12V=1.68A USB-A: 5V=3A / 9V=2A / 12V=1.5A Dual Ports: 5V=3A (MAX)
Dimensions	124mm x 59mm x 11.5mm (4.88" x 2.32" x 0.45")

CARBO 20000

Ultra Lightweight Carbon Fiber Power Bank



Weight: 295.5g (10.42 oz)

CARBO 20000 SPEC

Cell	Li-ion
Capacity	20,000mAh 3.85V (77Wh)
Rated Energy	13,500mAh 5V (TYP 2A)
Input	USB-C: 5V=2.4A / 9V=2A
Output	USB-C: 5V=3A / 9V=2.22A / 12V=1.68A USB-A: 5V=3A / 9V=2A / 12V=1.5A Dual Ports: 5V=3A (MAX)
Dimensions	124mm x 60mm x 21.8mm (4.88" x 2.36" x 0.86")

NC10000

Highland Power Bank



Weight: 168.5g (5.94 oz)

NC10000 SPEC

Cell	Li-ion
Capacity	10,000mAh 3.6V (36Wh)
Rated Energy	6,000mAh 5V (TYP 1A)
Input	USB-C: 5V=2.4A / 9V=2A
Output	USB-C: 5V=3A / 9V=2.22A / 12V=1.68A
Dimensions	89mm x 45.2mm x 22.6mm (3.50" x 1.78" x 0.89")
Lighting Output	50 Lumens Max



Low Temperature Resistant Carbon Fiber Power Banks



SUMMIT 10000

Weight: 172g (6.07 oz)

SUMMIT 10000 SPEC

Cell	Li-ion
Capacity	10,000mAh 3.85V (38.5Wh)
Rated Energy	6,400mAh 5V (TYP 1A)
Input	USB-C: 5V=2.4A / 9V=2A
Output	USB-C: 5V=3A / 9V=2.22A / 12V=1.68A USB-A: 5V=3A / 9V=2A / 12V=1.5A Dual Ports: 5V=3A (MAX)
Dimensions	125.5mm x 63.5mm x 14.5mm (4.94" x 2.50" x 0.57")

SUMMIT 20000 SPEC

Cell	Li-ion
Capacity	20,000mAh 3.85V (77Wh)
Rated Energy	13,500mAh 5V (TYP 2A)
Input	USB-C: 5V=2.4A / 9V=2A
Output	USB-C: 5V=3A / 9V=2.22A / 12V=1.68A USB-A: 5V=3A / 9V=2A / 12V=1.5A Dual Ports: 5V=3A (MAX)
Dimensions	124mm x 60mm x 21.8mm (4.88" x 2.36" x 0.86")



21700 Intelligent Battery System



21700 i Series Battery

NL2140i
NL2150HPi
NL2142LTHPi

ML21 Magnetic Light

Brightness	80 Lumens
CRI	≥ 90
Color Temperature	4000-4500K
Runtime	19h
Beam Diameter	12m
Peak Beam Intensity	9cd

MPB21 Magnetic Power Bank

Input	5V = 2A (MAX)
Output Voltage	4.2V±1% (Battery) 5V±5% (USB)
Output Current	2A (MAX)

NPB1

Ultra Waterproof Power Bank

NPB1 SPEC

Battery Type	21700 Li-ion Battery
Capacity	5,000mAh 3.64V (18.2Wh)
Rated Energy	3,200mAh 5V (TYP 1A)
Input	Micro-USB: 5V=2A
Output	USB-A: 5V=2.4A 9V=2A (18W MAX)
IP Rating	IP68



IP68

NPB2

Ultra Waterproof Power Bank

NPB2 SPEC

Battery Type	21700 Li-ion Batteries
Capacity	10,000mAh 3.64V (36.4Wh)
Rated Energy	6,400mAh 5V (TYP 1A)
Input	Micro-USB: 5V=2A 9V=2A
Output	USB-A: 5V=2.4A 9V=2A 12V=1.5A Single Port: 5V=2.4A 9V=2A 12V=1.5A Dual Ports: 5V=2.4A (18W MAX)
IP Rating	IP68



IP68

NPB4

Ultra Waterproof Power Bank

NPB4 SPEC

Battery Type	21700 Li-ion Batteries
Capacity	20,000mAh 3.64V (72.8Wh)
Rated Energy	12,400mAh 5V (TYP 1A)
Input	Micro-USB: 5V=2.4A 9V=2A USB-C: 5V=3A 9V=2A 12V=1.5A
Output	USB-A: 5V=3A 9V=2A 12V=1.5A USB-C: 5V=3A 9V=2A 12V=1.5A Multi Ports: 5V=3A
IP Rating	IP68



IP68



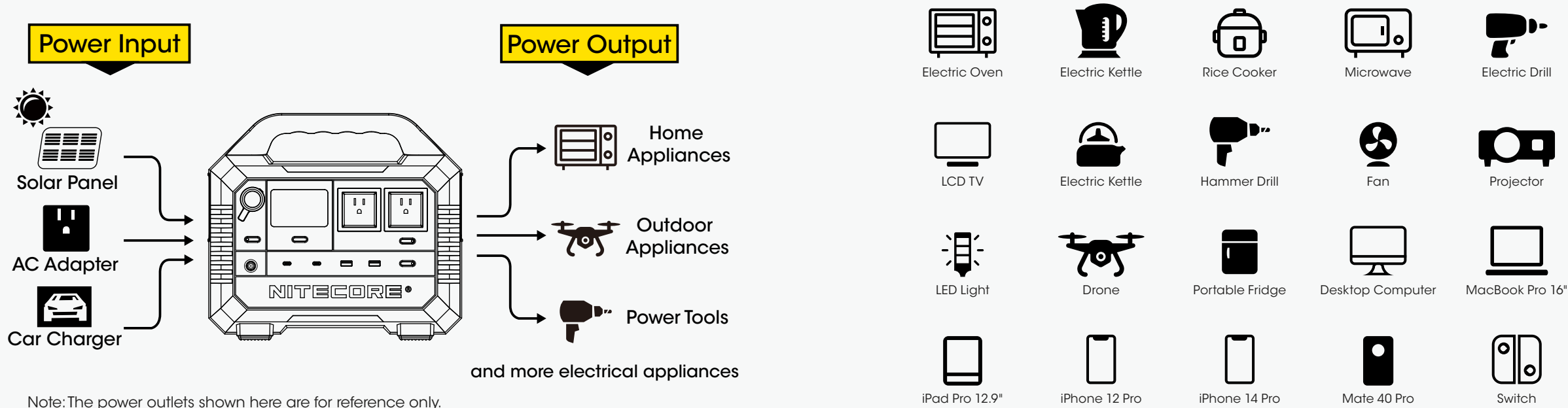
NITECORE®

OUTDOOR POWER

NITECORE Outdoor Power Solutions aim to create an eco-friendly power system with a green and sustainable lifestyle for outdoor enthusiasts. We strive to offer the most intelligent experience with professional, reliable and efficient energy storage products, designed to innovate the way of accessing power off the grid and allow a limitless power supply on the go.



How to Work?



Note: The power outlets shown here are for reference only.

PROFESSIONAL AND RELIABLE SAFEGUARDS



Battery Management System (BMS)

Maintains the best performance and prevents overcharge or over-discharge of the batteries to prolong their lifespan



UL Certified Battery Cells

Ensure a prolonged lifespan with increased safety



Pure Sine Wave AC Output

Unharmful and universally-friendly to various household appliances with a smooth and continuous wave form, instead of a sudden and choppy output



Multiple Protection Safeguards

- Overcurrent Protection
- Short-circuit Protection
- Over-discharge Protection
- Overcharge Protection
- Overvoltage Protection
- Thermal Protection



Backlit Real-time LCD Display

220V /110V AC Output

12V Regulated Cigarette Lighter Output



ABS Fireproof Shell



Main Switch



Output Switches



Cooling Fans on Both Sides

USB-C PD Input / Output (100W)

USB-A QC4 + Output (30W)





NES2000

Portable Outdoor Power Station



NES2000 SPEC

Cell	21700 Li-ion Batteries	
Capacity	2016Wh (25.2V, 80Ah) (56000mAh)	
DC Input	12V-36V, up to 20A	Total 720W max
AC Input	200-240V~ 50/60Hz	1200W max
USB-C Input	5V=3A / 9V=3A / 12V=3A / 15V=3A / 20V=5A	100W max per port
AC Output	220V~9.09A 50Hz, Pure Sine Wave	2000W, 4000W surge
DC1 (Cig Lighter) Output	12V=10A	Total 120W max
DC2 Output	24V=20A	500W max
USB-A Output	5V=3A / 9V=2A / 12V=2A / 20V=1.5A	30W max per port
USB-C Output	5V=3A / 9V=3A / 12V=3A / 15V=3A / 20V=5A	100W max per port
Operating Temperature	-10~40°C (14~104°F)	

 Electric Oven 1650W 0.9h	 Electric Kettle 1500W 1h	 Rice Cooker 1000W 1.5h	 Microwave 1300W 0.9-2.2h	 Electric Drill 500W 2-4h
 LCD TV 150W 10h	 Electric Kettle 800W 1.9h	 Hammer Drill 1080W 1.1-2.2h	 Fan 40W 38h	 Projector 100W 15h
 12V/5W LED Light 307h	 Drone 38W 40 Charges	 Portable Fridge 40W 73h	 Desktop Computer 200W 7.6h	 MacBook Pro 16" 15 Charges
 iPad Pro 12.9" 41 Charges	 iPhone 12 Pro 147 Charges	 iPhone 14 Pro 124 Charges	 Mate 40 Pro 94 Charges	 Switch 96 Charges



NES500

Portable Outdoor Power Station

- Dimensions: 262mm x 237mm x 154mm (10.31" x 9.33" x 6.06")
- Weight: 5.65kg (12.46 lbs)



NES500 SPEC

Cell	18650 Li-ion Batteries	
Capacity	518Wh (10.8V, 48Ah) (14400mAh)	
DC Input	14.4V-26V, up to 10A	160W max
AC Output	220V Version: 220V~2.27A 50Hz, Pure Sine Wave 110V Version: 110V~4.54A 60Hz, Pure Sine Wave	500W, 1000W surge
Cig Lighter Output	12V=10A	120W max
USB Output	5V=2.4A	12W max each port
USB-C Output	5V=3A / 9V=3A / 12V=3A / 15V=3A / 20V=3A	60W max
Operating Temperature	-10~40°C (14~104°F)	



NES1200

Portable Outdoor Power Station

- Dimensions: 317mm x 214mm x 282.5mm (12.48" x 8.43" x 11.12")
- Weight: 10.65kg (23.48 lbs)



NES1200 SPEC

Cell	18650 Li-ion Batteries	
Capacity	1252.8Wh (21.6V, 58Ah) (34800mAh)	
DC Input	12V-36V, up to 10A	180W max
USB-C Input	5V=3A / 9V=3A / 12V=3A / 15V=3A / 20V=5A	100W max per port
AC Output	220V Version: 220V~6A 50Hz, Pure Sine Wave 110V Version: 110V~11A 60Hz, Pure Sine Wave	1200W, 2200W surge
Cig Lighter Output	12V=10A	120W max
USB-A Output	5V=3A / 9V=2A / 12V=2A / 20V=1.5A	30W max per port
USB-C Output	5V=3A / 9V=3A / 12V=3A / 15V=3A / 20V=5A	100W max per port
Operating Temperature	-10~40°C (14~104°F)	

NPS400

Portable Outdoor Power Station

- Dimensions: 244mm x 187.7mm x 157.3mm (9.61" x 7.39" x 6.19")
- Weight: 5.68kg (12.52 lbs)



NPS400 SPEC

Cell	18650 Li-ion Batteries	
Capacity	421Wh (10.8V, 39Ah) (117000mAh)	
DC Input	14.4V-26V, up to 10A	160W max
AC Output	220V Version: 220V~1.36A 50Hz, Pure Sine Wave 110V Version: 110V~2.75A 60Hz, Pure Sine Wave	300W, 600W surge
Cig Lighter Output	12V=10A	Cig Lighter + DC Output: Total 120W max
DC Output	12V=10A	
USB Output	5V=2.4A	12W max each port
USB QC Output	5V=2.4A / 9V=2A	18W max
USB-C Output	5V=3A / 9V=3A / 12V=3A / 15V=3A / 20V=3A	60W max
Operating Temperature	-10~40°C (14~104°F)	

NPS600

Portable Outdoor Power Station

- Dimensions: 244mm x 187.7mm x 157.3mm (9.61" x 7.39" x 6.19")
- Weight: 5.83kg (12.85 lbs)



NPS600 SPEC

Cell	21700 Li-ion Batteries	
Capacity	594Wh (10.8V, 55Ah) (165000mAh)	
DC Input	14.4V-26V, up to 10A	160W max
AC Output	220V Version: 220V~1.36A 50Hz, Pure Sine Wave 110V Version: 110V~2.75A 60Hz, Pure Sine Wave	300W, 600W surge
Cig Lighter Output	12V=10A	Cig Lighter + DC Output: Total 120W max
DC Output	12V=10A	
USB Output	5V=2.4A	12W max each port
USB QC Output	5V=2.4A / 9V=2A	18W max
USB-C Output	5V=3A / 9V=3A / 12V=3A / 15V=3A / 20V=3A	60W max
Operating Temperature	-10~40°C (14~104°F)	



FSP100W

100W ETFE Waterproof Foldable Solar Panel

FSP100W SPEC

Weight	2.6kg (5.7 lbs)
Panel Number	8
Cell Efficiency	≥ 23%
Operating Current	DC Output 5.6A
Operating Voltage	DC Output 18V
Total Output Power	100W (MAX)
Total Output Power	7.9*5.5mm

Unfolded Dimensions: 1,294mm x 606mm x 5mm (50.9" x 23.9" x 0.2")
Folded Dimensions: 385mm x 300mm x 45mm (15.2" x 11.8" x 1.8")



FSP100

100W Foldable Solar Panel

FSP100 SPEC

Weight	2.1kg (4.6 lbs)
Panel Number	8
Cell Efficiency	24%
Operating Current	DC Output 5.4A
Operating Voltage	DC Output 18V (MAX)
Total Output Power	100W (MAX)
Output Ports	7.9*5.5mm, USB-A x 2, USB-C
USB-A Output	Total 5V=3.1A
USB-C Output	5V=3A / 9V=3A / 12V=3A / 15V=3A

Unfolded Dimensions: 58cm x 143cm x 2.5cm (22.8" x 56.3" x 1.0")
Folded Dimensions: 29cm x 34cm x 7cm (11.4" x 13.4" x 2.8")



FSP30

30W Foldable Solar Panel

FSP30 SPEC

Weight:	625g±5g (1.38 lbs±0.01 lbs)
Panel Number	4
Cell Efficiency	24%
Total Output Power	30W (MAX)
Output Ports	USB-A x 2, USB-C
USB-A Output	Total 5V=3.1A
USB-C Output	5V=3A / 9V=2A



Unfolded Dimensions:
295mm x 880mm x 4mm
(11.61" x 34.65" x 0.16")
Folded Dimensions:
295mm x 170mm x 45mm
(11.61" x 6.69" x 1.77")



Extension Cable for Solar Panels
10m (33ft)



Parallel Cable for Solar Panels
5m (16ft)

NITECORE®

CHARGER





UM2



2 BATTERY SLOTS

UM2 SPEC

Compatible with	IMR / Li-ion / LiFePO4 / Ni-MH / Ni-Cd
Input	DC 5V/2A 9V/2A 18W (MAX)
Output voltage	4.35V±1% / 4.2V±1% / 3.7V±1% / 1.48V±1%
Output current	QC Mode: 1,500mA*2 (MAX) Standard Mode: 1,000mA*2 (MAX)



UM4



4 BATTERY SLOTS

UM4 SPEC

Compatible with	IMR / Li-ion / LiFePO4 / Ni-MH / Ni-Cd
Input	DC 5V/2A 9V/2A 18W (MAX)
Output voltage	4.35V±1% / 4.2V±1% / 3.7V±1% / 1.48V±1%
Output current	QC Mode: 1,500mA*1 (MAX), 1,500mA*2 (MAX), 750mA*4 (MAX) Standard Mode: 1,500mA*1 (MAX), 1,000mA*2 (MAX), 500mA*4 (MAX)

UM2 & UM4 Compatible with

IMR/Li-ion/LiFePO4: 10440, 14500, 14650, 16500, 16340 (RCR123), 16650, 17350, 17500, 17650, 17670, 17700, 18350, 18490, 18500, 18650, 18700, 20700, 21700, 22500, 22650, 25500, 26500, 26650, 26700
Ni-MH/Ni-Cd: AA, AAA, AAAA, C, D

UMS2



2 BATTERY SLOTS

UMS2 SPEC

Compatible with	IMR / Li-ion / LiFePO4 / Ni-MH / Ni-Cd
Input	DC 5V/2A 9V/2A 18W (MAX)
Output voltage	4.35V±1% / 4.2V±1% / 3.7V±1% / 1.48V±1%
Output current	QC Mode: 3000mA *1 (MAX), 2000mA *2 (MAX), Standard Mode: 2000mA *1 (MAX), 1000mA *2 (MAX)



UMS4



4 BATTERY SLOTS

UMS4 SPEC

Compatible with	IMR / Li-ion / LiFePO4 / Ni-MH / Ni-Cd
Input	DC 5V/2A 12V/1.5A 18W (MAX)
Output voltage	4.35V±1% / 4.2V±1% / 3.7V±1% / 1.48V±1%
Output current	QC Mode: 3000mA *1 (MAX), 2000mA *2 (MAX), 1000mA*4 (MAX) Standard Mode: 2000mA *1 (MAX), 1000mA *2 (MAX), 500mA*4 (MAX)



UMS2 & UMS4 Compatible with

IMR/Li-ion/LiFePO4: 10440, 14500, 14650, 16500, 16340 (RCR123), 16650, 17350, 17500, 17650, 17670, 17700, 18350, 18490, 18500, 18650, 18700, 20700, 21700, 22500, 22650, 25500, 26500, 26650, 26700
Ni-MH/Ni-Cd: AA, AAA, AAAA, C, D



UI1

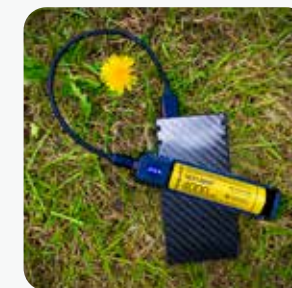


1 BATTERY SLOT

Portable USB Battery Charger

UI1 SPEC

Compatible with	IMR / Li-ion
Input	DC 5V/1A 5W
Output voltage	4.2V±1%
Output current	1000mA (MAX)



UI1 & UI2

Compatible with

IMR/Li-ion: 10340, 10350, 10440, 10500, 12340, 12500, 12650, 13450, 13500, 13650, 14430, 14500, 14650, 16500, 16340 (RCR123), 16650, 17350, 17500, 17650, 17670, 18350, 18490, 18500, 18650, 20700, 21700, 22500, 22650, 25500, 26500, 26650



UI2



2 BATTERY SLOTS

Portable Dual-Slot USB Battery Charger

UI2 SPEC

Compatible with	IMR / Li-ion
Input	DC 5V/2A 10W
Output voltage	4.2V±1%
Output current	1000mA*2 (MAX)

Q4

4 BATTERY SLOTS

Four-Slot Li-ion Battery Quick Charger

Q4 SPEC

Compatible with	IMR / Li-ion
Input	DC 12V 2000mA 24W
Output voltage	4.2V±1%
Output current	2A*2, 1A*4



Q6

6 BATTERY SLOTS

Six-Slot Li-ion Battery Quick Charger

Q6 SPEC

Compatible with	IMR / Li-ion
Input	DC 12V 2000mA 24W
Output voltage	4.2V±1%
Output current	2A*2, 1A*4, 0.65A*6



Q4 & Q6 Compatible with

Li-ion/IMR: 10340, 10350, 10440, 10500, 12340, 12500, 12650, 13450, 13500, 13650, 14350, 14430, 14500, 14650, 16500, 16340 (RCR123), 16650, 17350, 17500, 17650, 17670, 17700, 18350, 18490, 18500, 18650, 18700, 20700, 21700, 22500, 22650, 22700, 25500, 26500, 26650, 26700

HOT SALE

Ci2

USB-C Charging

2 BATTERY SLOTS

Intelligent USB-C Dual-Slot Superb Charger

Ci2 SPEC

Compatible with	IMR / Li-ion / Ni-MH / Ni-Cd
Input	5V=2A / 9V=2A / 12V=1.5A 18W (MAX)
Output voltage	4.2V±1% / 1.48V±1%
Output current	Fast Charge Mode: 3,000mA*1 MAX / 1,500mA*2 MAX Standard Mode: 2,000mA*1 MAX / 1,000mA*2 MAX



HOT SALE

NEW i2

2 BATTERY SLOTS

Dual-Slot Intellicharger

NEW i2 SPEC

Compatible with	IMR / Li-ion / LiFePO4 / Ni-MH / Ni-Cd
Input	AC 100-240V 50/60Hz 0.25A (MAX) 8W DC 9-12V
Output voltage	4.35V±1% / 4.2V±1% / 3.7V±1% / 1.48V±1%
Output current	500mA x 2 / 1000mA x 1



Ci4

USB-C Charging

4 BATTERY SLOTS

Intelligent USB-C Four-Slot Superb Charger

Ci4 SPEC

Compatible with	IMR / Li-ion / Ni-MH / Ni-Cd
Input	5V=2A / 9V=2A / 12V=1.5A 18W (MAX)
Output voltage	4.2V±1% / 1.48V±1%
Output current	Fast Charge Mode: 3,000mA*1 MAX / 1,500mA*2 MAX / 1,000mA*3 MAX / 750mA*4 MAX Standard Mode: 2,000mA*1 MAX / 1,000mA*2 MAX / 700mA*3 MAX / 500mA*4 MAX



NEW i4

4 BATTERY SLOTS

Four-Slot Intellicharger

NEW i4 SPEC

Compatible with	IMR / Li-ion / LiFePO4 / Ni-MH / Ni-Cd
Input	AC 100-240V 50/60Hz 0.25A (MAX) 10W DC 9-12V 1A
Output voltage	4.35V±1% / 4.2V±1% / 3.7V±1% / 1.48V±1%
Output current	1.5A x 1 / 0.75A x 2 / 0.5A x 2 / 0.375A x 4



Ci2 & Ci4 Compatible with

IMR/Li-ion: 10440, 14500, 14650, 16500, 16340 (RCR123), 16650, 17350, 17500, 17650, 17670, 17700, 18350, 18490, 18500, 18650, 18700, 21700, 22500, 22650, 25500, 26500, 26650, 26700
Ni-MH/Ni-Cd: AA, AAA, AAAA, C, D

NEW i2 & NEW i4 Compatible with

Li-ion/IMR/LiFePO4: 10340, 10350, 10440, 10500, 12340, 12500, 12650, 13450, 13500, 13650, 14350, 14430, 14500, 14650, 16500, 16340 (RCR123), 16650, 17350, 17500, 17650, 17670, 18350, 18490, 18500, 18650, 18700, 20700, 21700, 22500, 22650, 25500, 26500, 26650
Ni-MH/Ni-Cd: AA, AAA, AAAA, C, D

V2

In-Vehicle Battery Charger



V2 SPEC

Compatible with	IMR / Li-ion / Ni-MH / Ni-Cd
Input	DC 12V 42W (MAX)
Output	Battery: 4.2V±1% / 3A*2 (MAX) 1.48V±1% / 2A*2 (MAX) USB: 5V±5% 1A*2 / 2.1A*1 (MAX)

V2 Compatible with

Li-ion/IMR: 14500, 14650, 16500, 16340 (RCR123), 16650, 17350, 17500, 17650, 17670, 18350, 18490, 18500, 18650, 22500, 22650, 25500, 26500, 26650, 17700, 18700, 20700, 21700, 22700, 26700
Ni-MH/Ni-Cd: AA, C

VCL10

Multifunctional All-in-One Car Charger



VCL10 SPEC

Input	DC 12V 2.5A (MAX)
Output	DC 5V 2.4A (MAX)
Quick Charge 3.0	DC 3.6V-12V 2.4A (MAX)
Quick Charge 2.0	DC 5V / 9V / 12V 2.4A (MAX)

i8

Eight-Slot Intellicharger

8 BATTERY SLOTS



i8 SPEC

Compatible with	IMR / Li-ion / Ni-MH / Ni-Cd
Input	AC 100-240V 50/60Hz 0.6A (MAX) 30W DC 12V 3A
Output voltage	Battery: 4.2V±1% / 1.48±1% / USB: 5V±5%
Output current	Battery: 1.5A x 2 / 1A x 4 / 0.75A x 4 / 0.5A x 8 USB: 5V*2.1A

i8 Compatible with

Li-ion/IMR: 10340, 10350, 10440, 10500, 12340, 12500, 12650, 13450, 13500, 13650, 14350, 14430, 14500, 14650, 16500, 16340 (RCR123), 16650, 17350, 17500, 17650, 17670, 18350, 18490, 18500, 18650, 22500, 22650, 25500, 26500, 26650
Ni-MH/Ni-Cd: AA, AAA, C, D





SC4 & SC2
Compatible with

Li-ion/IMR/LiFePO4: 10440, 10500, 12340, 12500, 12650, 13450, 13500, 13650, 14350, 14430, 14500, 14650, 16500, 16340 (RCR123), 16650, 17350, 17500, 17650, 17670, 18350, 18490, 18500, 18650, 22500, 22650, 25500, 26500, 26650
Ni-MH/Ni-Cd: AA, AAA, AAAA, C, D

SC2

Dual-Slot Superb Charger

2 BATTERY SLOTS

SC2 SPEC	
Compatible with	IMR / Li-ion / LiFePO4 / Ni-MH / Ni-Cd
Input	AC 100-240V 50/60Hz 0.9A (MAX) 30W DC 12V 2.5A
Output voltage	Battery: 4.35V±1% / 4.2V±1% / 3.7V±1% / 1.48V±1% USB: 5V 2.1A
Output current	3A + 2A MAX

SC4

Four-Slot Superb Charger

4 BATTERY SLOTS

SC4 SPEC	
Compatible with	IMR / Li-ion / LiFePO4 / Ni-MH / Ni-Cd
Input	AC 100-240V 50/60Hz 1A (MAX) 40W DC 12V 3A
Output voltage	Battery: 4.35V±1% / 4.2V±1% / 3.7V±1% / 1.48V±1% USB: 5V±5% 2.1A MAX
Output current	3A*2 (MAX) 1.5A*4

D2

Dual-Slot Digicharger

2 BATTERY SLOTS

D2 SPEC	
Compatible with	IMR / Li-ion / LiFePO4 / Ni-MH / Ni-Cd
Input	AC 100-240V 50/60Hz 0.25A (MAX) DC 12V 1A
Output voltage	4.2V±1% / 3.7V±1% / 1.48V±1%
Output current	500mA x 2

D4

Four-Slot Digicharger

4 BATTERY SLOTS

D4 SPEC	
Compatible with	IMR / Li-ion / LiFePO4 / Ni-MH / Ni-Cd
Input	AC 100-240V 50/60Hz 0.35A (MAX) DC 12V 1A
Output voltage	4.2V±1% / 3.7V±1% / 1.48V±1%
Output current	375mA x 4 / 750mA x 2

D2 & D4 Compatible with

Li-ion/IMR/LiFePO4: 26650, 22650, 18650, 17670, 18490, 18350, 17500, 14500, 16340 (RCR123), 10440
Ni-MH/Ni-Cd: AA, AAA, AAAA, C



UA42Q

2-Port QC USB Adapter

UA42Q SPEC	
Input	100-240V-AC 50/60Hz 1A (MAX)
Output	5V=3A, 9V=2A, 12V=1.5A 36W MAX



UA55

5-Port USB Desktop Adapter

UA55 SPEC	
Input	100-240V~ 50/60Hz 1.5A (MAX)
Output	5V=10A (2A MAX Per Port) 50W MAX



UA66Q

6-Port QC USB Desktop Adapter

UA66Q SPEC	
Input	100-240V~ 50/60Hz 1.5A (MAX)
Output	5V USB Ports: 5V=10A (2A MAX Per Port), 50W MAX QC 3.0 Port: 5V=2A / 9V=2A / 12V=1.5A, 18W MAX Total 68W MAX



MBS20

Material Bottle Storeroom

MBS20 SPEC	
Motor	3RPM (MAX)
Input	USB 5V=2A (MAX)
Output	USB 5V=2A (MAX)
Dimensions	152.8mm x 99.7mm x 160.3mm (6.02" x 3.93" x 6.31") (Stand Not Included)
Weight	426.2g (15.03oz) (Stand Included)
Materials	Fire Retardant PC Materials
Accessories	USB-C Charging Cable, Stand

ACCESSORIES



► Rechargeable Li-ion Batteries

NITECORE rechargeable Li-ion batteries feature higher energy intensity, better power storage and longer runtime compared to other batteries, and environmental-friendly that can be recharged for over 500 times.

Model	Specification	Capacity
NL1823	18650	2300mAh
NL1826	18650	2600mAh
NL1832	18650	3200mAh
NL1834	18650	3400mAh
NL1836	18650	3600mAh
NL166	16340	650mAh
NL169	16340	950mAh
NL1410	14500	1000mAh
NL2150	21700	5000mAh
NL2153	21700	5300mAh



► Micro-USB/USB-C Rechargeable Li-ion Batteries

With a built-in Micro-USB / USB-C port, it is convenient to charge the rechargeable Li-ion batteries via a USB cable.

Model	Specification	Capacity
NL169R	16340	950mAh
NL1475R	14500	750mAh
NL1826R	18650	2600mAh
NL1834R	18650	3400mAh
NL1836R	18650	3600mAh
NL2150HPR	21700	5000mAh
NL2150RX	21700	5000mAh



► High Performance Batteries

Specially designed for high performance products, it features high discharge current and excellent output with resistance to extreme conditions, capable of driving your devices to the best performance.

Model	Specification	Capacity	Discharge Current
NL1836HP	18650	3600mAh	8A
NL1835LTHP	18650	3500mAh	8A
IMR18650 3100mAh(For IM28)	18650	3100mAh	10A
IMR18650	18650	3100mAh	35A
NL2150HPR	21700	5000mAh	15A
NL2153HP	21700	5300mAh	20A



► Low-temperature Resistant Batteries

Specially designed for freezing environment like high altitude area or severe cold area, it is low temperature resistant even at the lowest of -40°C.

Model	Specification	Capacity	Discharge Current
NL1835LTHP	18650	3500mAh	8A
NL2142LTP	21700	4200mAh	8A
NL2142LTHPR	21700	4200mAh	15A
NL2142LTHPi	21700	4200mAh	15A



► 21700 i Series Battery

As a patent product developed by NITECORE, the 21700 i Series Battery is a proprietary 21700 rechargeable Li-ion battery featuring dual way output with positive and negative polarities at both ends and a high energy density.

Model	Specification	Capacity	Discharge Current
NL2140i	21700	4000mAh	8A
NL2150HPi	21700	5000mAh	15A
NL2153HPi	21700	5300mAh	20A
NL2142LTHPi	21700	4200mAh	15A



► Battery Magazines



NBM40

For carrying 4 x 18650 batteries



NBM41

For carrying 4 x 21700 batteries

The battery magazine is able to withstand up to 18kg (40 lbs) of weight with tear resistance and high resilience, available to carry 4 x 18650 / 21700 batteries.

► Flexible USB Stands

USB-A to USB-C Stand



USB-C to USB-C Stand

With the flexible USB stand, the keychain lights can become a reading lamp and enjoy the inexhaustible power supply on the go even in the charging status to avoid outdoor power shortage.

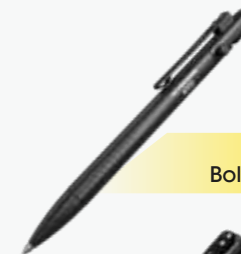
► Nylon Braided USB-C Charging Cable



UAC20

The UAC20 is a USB-C to USB-A 2.0 nylon braided charging cable with a max current of 3A, compatible with the mainstream USB-C devices. The nylon braiding with multiple protections makes it fearless of the outdoor environments.

► Titanium / Aluminum Collection



► NTP31

Aluminum Alloy
Bolt Action Tactical Pen



► NTP21

Aluminum Alloy
Tactical Pen



► NSH10

Titanium Alloy
Multiuse Snap Hook



► NWS10

Titanium Alloy Unibody
Emergency Whistle



► NTP40

Titanium Alloy
Mechanical Pencil



► NTP30

Titanium Alloy
Bolt Action Tactical Pen



► NTK05

Titanium Alloy
Keychain Knife



NITECORE®

CARRY GEAR

► BP Series

NEW **BP23 Pro**

Multipurpose Commuting Backpack

Capacity: 23L / 1,404 cu in
 Dimensions: 47cm x 29cm x 15cm / 18.5" x 11.4" x 5.9"
 Weight: 1,260g / 2.8 lbs

23L (1,404 cu in) Large Capacity With 4 Compartments

Features



CORDURA® Nylon Fabric



3D Carrying System



Internal Fiberglass Stay

HOT SALE **BP23**

Weight: 1,030g / 2.3 lbs

Wearproof 600D Polyester Fabric



High-visibility Orange Interior Lining Multifunctional Main Compartment



- 1 Laptop Compartment
- 5 Dual Internal Side Pockets
- 6 Mesh Zippered Pocket in the Front

BP18

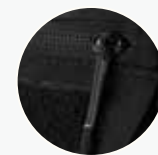
Commuter Backpack

Capacity: 18L / 1,098 cu in
 Dimensions: 47cm x 24cm x 16cm / 18.5" x 9.4" x 6.3"
 Weight: Approx. 710g / 1.6 lbs

Features



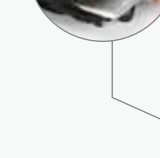
18L (1,098 cu in) main compartment available to carry a 14" laptop/tablet



Premium YKK zippers

Dual frontal and top zipper design for quick storage and access

MOLLE Strap System for modular extensions



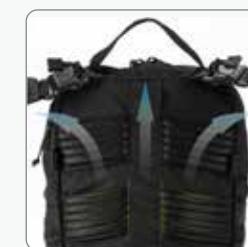
Quick detachable shoulder straps for switching between various carry modes



Straw/cable channel on the top side

UTX Duraflex buckles

Concealed anti-hook side compartments



Fishbone Carrying System for outstanding ergonomic comfort and breathability

BP16

Commuter Backpack

Capacity: 16L / 976 cu in
 Dimensions: 46cm x 29cm x 14cm / 18.1" x 11.4" x 5.5"
 Weight: Approx. 815g / 1.8 lbs

Features



BP20

Multi-Purpose Backpack

Capacity: 20L / 1,220.5 cu in
 Dimensions: 45cm x 28cm x 12cm / 17.7" x 11" x 4.7"
 Weight: Approx. 1.5kg / 3.3 lbs

Features



► SLB Series





SLB04

3-in-1 Sling Bag

Capacity: 1.5L / 92 cu in
 Dimensions: 25cm x 5.5cm x 19cm / 9.84" x 2.17" x 7.48"
 Weight: 135g / 0.3 lbs

3-in-1 Design



Handbag



Chest Bag



Sling Bag

► SLB Series



SLB02
Flap Messenger Bag



SLB07
Tote Bag



SLB09
Commuter Sling Bag

► NPP Series



NPP10
Pocket Pouch



NPP20
Pocket Pouch



NPP30
Pocket Pouch



NPP40
Sacoche Bag



NPP50
Fanny Pack

► NUP Series



NUP10
Utility Pouch



NUP20
Utility Pouch



NUP30
Multi-Purpose Utility Pouch

NEW

SLB05

Modular Commuting Sling Bag

Capacity: 2L / 122 cu in
 Dimensions: 22cm x 5cm x 16cm / 8.7" x 2.0" x 6.3"
 Weight: 275g / 0.6 lbs

Designed in Collaboration with OVERCLOCK ROAM



The flap and the frontal pockets designed with 600D Nylon fabric with water resistant coating
 500D high quality Nylon material with excellent resistance to fouling, wear, and splashes

Premium Material


Two-way YKK Zippers


UTX Duraflex Buckles


Cushion Foam Available in the sides, bottom, and back for shock resistance and impact resistance



Sling Bag



Handbag



Utility Pouch

Multiple Carrying Options



2 x MOLLE System Clips Included For attaching to other backpacks

▶ Waterproof Dry Bags



WDB05



WDB20



Ergonomic Design



Reliable Water Resistance



Secured Fastening System

▶ Running Belt



BLT10

▶ Soft Flask



▶ Tactical Case



NTC10

▶ Range Bag



NRB10

▶ Hook-and-loop Modules



NHL03



NHL04



NHL01

▶ Tactical Belt Pads



MB LW

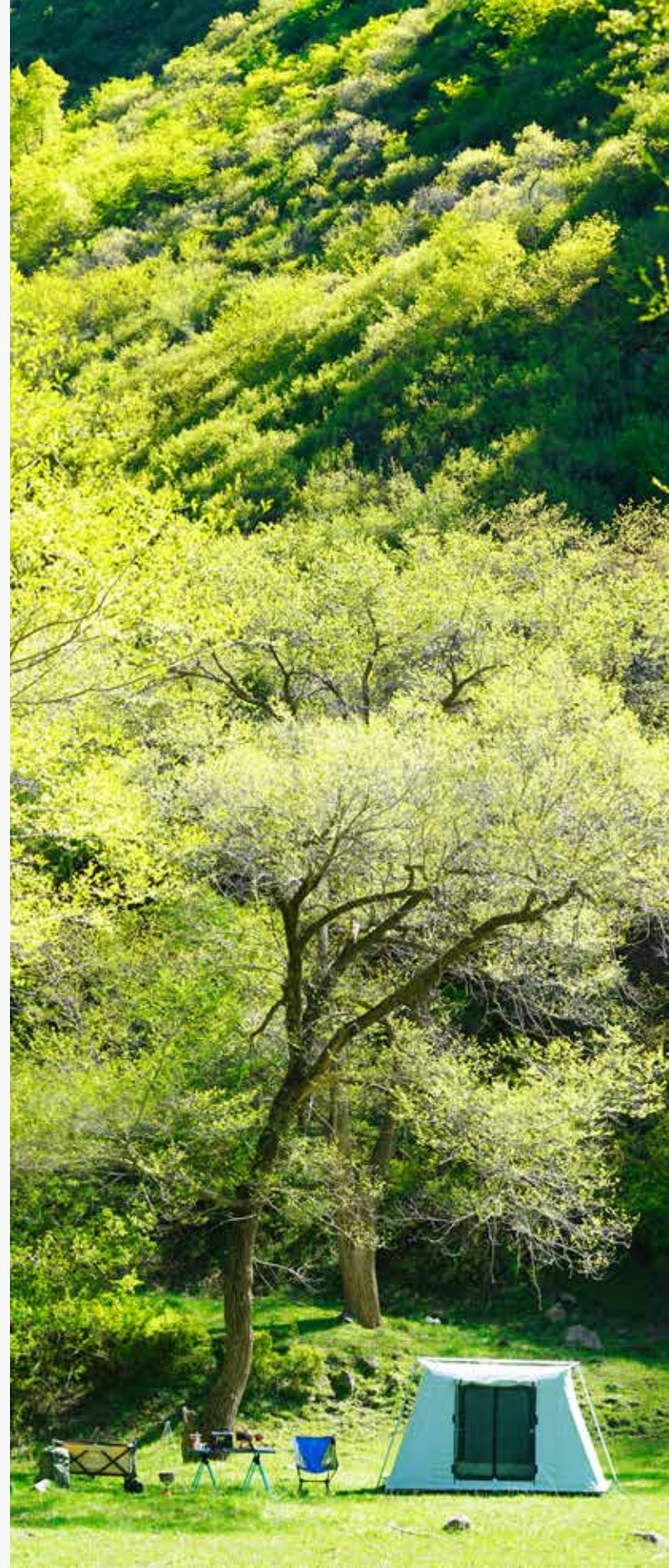


MB SL

▶ Bandanas



MODEL		DIMENSIONS	WEIGHT	BATTERY SLOTS / OUTPUT PORTS
SC Series	SC2	155mm × 80mm × 44mm (6.1" × 3.16" × 1.73")	263g (9.28oz)	2
	SC4	165mm × 110mm × 45mm (6.5" × 4.33" × 1.77")	385g (13.59oz)	4
D Series	D2	143mm × 74mm × 36mm (5.63" × 2.91" × 1.42")	168g (5.93oz)	2
	D4	143mm × 99mm × 36mm (5.63" × 3.9" × 1.42")	239g (8.43oz)	4
U Series	UM2	152mm × 73mm × 40mm (5.98" × 2.87" × 1.57")	148.3g(5.23oz)	2
	UM4	159mm × 107mm × 41mm (6.26" × 4.21" × 1.61")	232.8g(8.21oz)	4
	UMS2	152mm × 73mm × 40mm (5.98" × 2.87" × 1.57")	157.7g(5.56oz)	2
	UMS4	159mm × 107mm × 41mm (6.26" × 4.21" × 1.61")	255.4g(9.01oz)	4
	UI1	122.5mm × 29.2mm × 32mm (4.82" × 1.15" × 1.26")	40.5g (1.43oz)	1
	UI2	125.5mm × 59.5mm × 32.1mm (4.94" × 2.34" × 1.26")	79.5g (2.8oz)	2
i Series	CI2	148mm × 65mm × 37mm (5.83" × 2.56" × 1.46")	120.4g (4.25oz)	2
	CI4	148mm × 105mm × 37mm (5.83" × 4.13" × 1.46")	191.4g (6.75oz)	4
	NEW i2	132mm × 70mm × 35mm (5.2" × 2.76" × 1.38")	126g(4.44oz)	2
	NEW i4	140mm × 94.8mm × 37mm (5.51" × 3.73" × 1.45")	202g(7.12oz)	4
	i8	117mm × 101mm × 134.5mm (4.61" × 3.98" × 5.30")	488.2g(17.22oz)	8
Q Series	Q4	125.4mm × 95.6mm × 36.2mm (4.94" × 3.76" × 1.43")	150.3g(5.3oz)	4
	Q6	132.5mm × 137.5mm × 36.2mm (5.22" × 5.41" × 1.43")	229g(8.08oz)	6
V Series	V2	67mm × 65mm × 125mm (2.36" × 2.29" × 4.41")	197.6g (6.94oz)	2
	VCL10	78.5mm × 24.5mm × 23mm (3.09" × 0.96" × 0.91")	44.5g (1.57oz)	1
USB Adapters	UA42Q	82mm × 65mm × 28.4mm (3.23" × 2.56" × 1.19")	116g (4.09oz)	2
	UA55	97.3mm × 68.4mm × 28.3mm (3.83" × 2.69" × 1.11")	178.5g (6.3oz)	5
	UA66Q	109.2mm × 80.4mm × 28.7mm (4.3" × 3.17" × 1.13")	222g (7.83oz)	6



▶ PHOTO CREDITS

Pangolins with Packs
 IG@batis_film
 Eric Wang
 peter
 Packhacker
 Zhihao Chen
 zizhen

All images, text and statements specified herein this catalogue are for reference purpose only. Should any discrepancy occur between this catalogue and information specified on www.nitecore.com, information on our official website shall prevail. Sysmax Innovations Co., Ltd. reserves the rights to interpret and amend the content of this document at any time without prior notice.